


MARIETTA, GEORGIA

TACAN RWY 11

TACAN Chan 77	APCH CRS 106°	Rwy ldg 10,002 TDZE 1069 Arprt Elev 1069	[USAF]	DOBBINS ARB (KMGE)
-------------------------	-------------------------	---	--------	--------------------

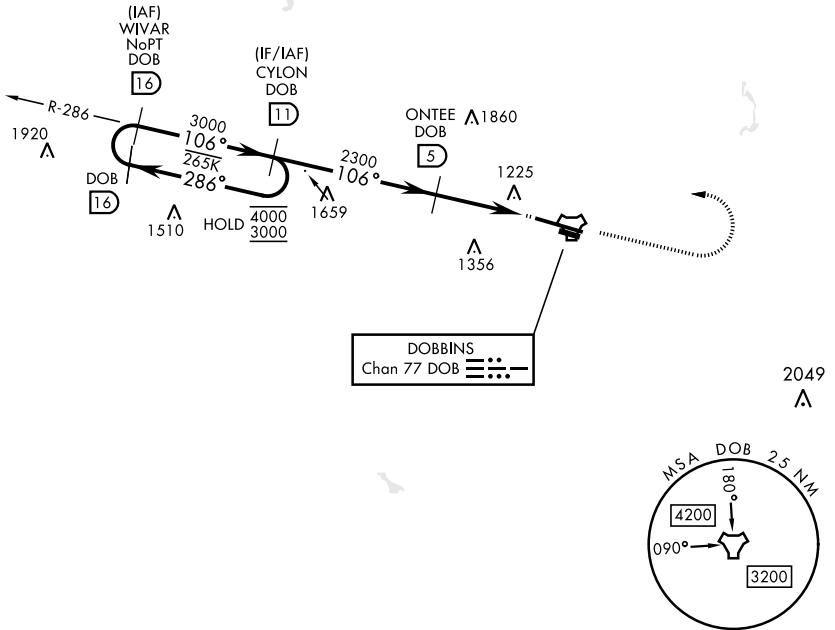
▼ * When ALS inop, increase CAT AB RVR to 55 and vis to 1 mile, CAT CDE vis to 1½ miles.
 ** Circling not authorized N of Rwy 11-29 for CAT DE aircraft. Circling to assault strip not authorized.

ALSF-1 

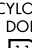
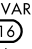

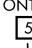
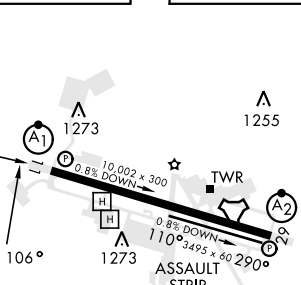
† MISSED APPROACH: Climb to 2000 on track 106°, then climbing left turn to 3000, intercept DOB TACAN R-286 to CYLON and hold.

ATIS ★ 269.5	ATLANTA APP CON 121.0 268.7	TOWER ★ 120.75 370.875	GND CON 125.3 275.8	ASR
------------------------	---------------------------------------	----------------------------------	-------------------------------	-----

† Missed approach requires use of RNAV or ATC RADAR monitoring.



EMERG SAFE ALT 100 NM 7800

	2000 tr 106°		3000		CYLON DOB 	ELEV 1069	TDZE 1069
	WIVAR 		CYLON 		ONTEE 		
	3000		3000		2300	106° 106° 2.97° TCH 56 3.2 NM 0.5 NM	
CATEGORY	A	B	C	D	E		
S-11*	1600/40	531 (600-¾)	1600/55	531 (600-1)			
CIRCLING**	1600-1 531 (600-1)	1620-1 551 (600-1)	1760-2 691 (700-2)	1760-2¼ 691 (700-2¼)	1760-2½ 691 (700-2½)	HIRL Rwy 11-29 REIL Rwy 11 and 29	

MARIETTA, GEORGIA

33°55'N-84°31'W

DOBBINS ARB (KMGE)

Amdt 8 11JUL24

TACAN RWY 11

SE-4, 28 NOV 2024 to 26 DEC 2024

SE-4, 28 NOV 2024 to 26 DEC 2024