

WAAS CH 48940	APP CRS 129°	Rwy Idg TDZE 54	5012
W13A		Apt Elev 55	

RNAV (GPS) RWY 13

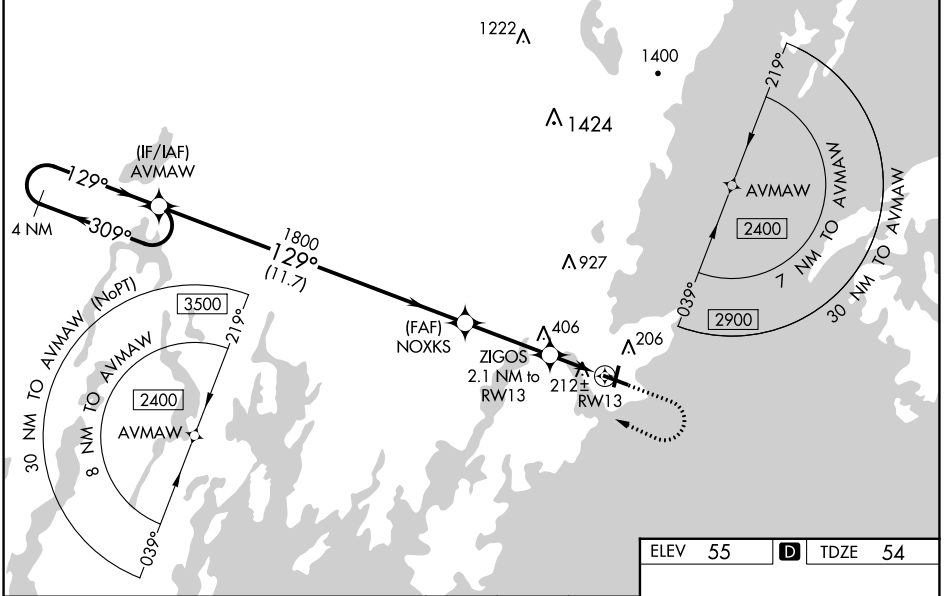
KNOX COUNTY RGNL (RKD)

▼ DME/DME RNP -0.3 NA. VDP and Baro-VNAV NA when using Wiscasset altimeter setting. When local altimeter setting not received, use Wiscasset altimeter setting and increase LPV DA to 319 feet, LNAV/VNAV DA to 467 feet and all MDA 80 feet. Increase LNAV/VNAV visibility all Cats to 1 SM, LNAV Cat C/D to 1 SM and Circling Cat C to 2 1/4 SM. For inop ALS increase LNAV/VNAV all Cats visibility to 1 1/8 SM. For inop ALS when using Wiscasset altimeter setting increase LPV all Cats visibility to 7/8 SM, LNAV/VNAV all Cats visibility to 1 3/8 SM and LNAV Cat C/D to 1 3/8 SM. For uncompensated Baro-VNAV systems, LNAV/VNAV NA below -15°C (5°F) or above 54°C (130°F).

MALSRL

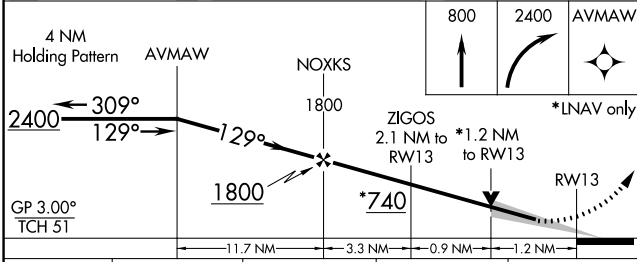
MISSED APPROACH:
Climb to 800 then climbing right turn to 2400 direct AVMAW and hold.

AWOS-3PT 119.025	PORTLAND APP CON* 120.4 299.2	CLNC DEL 123.8	UNICOM 123.05 (CTAF)
----------------------------	---	--------------------------	--------------------------------



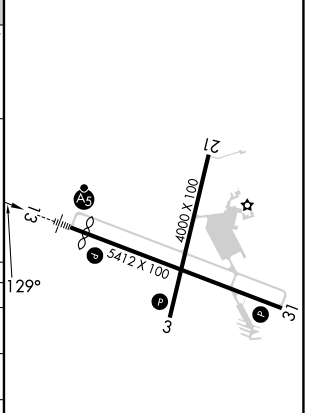
NE-1, 28 NOV 2024 to 26 DEC 2024

NE-1, 28 NOV 2024 to 26 DEC 2024



ELEV 55	D	TDZE 54
---------	----------	---------

CATEGORY	A	B	C	D
LPV DA		254-1/2	200 (200-1/2)	
LNAV/VNAV DA		402-3/4	348 (400-3/4)	
LNAV MDA	480-1/2	426 (500-1/2)	480-3/4	426 (500-3/4)
C CIRCLING	580-1	525 (600-1)	720-1 3/4 665 (700-1 3/4)	1140-3 1085 (1100-3)



REIL Rwy 3 and 31 **Ⓛ**
MIRL Rwy 3-21 **Ⓛ**
HIRL Rwy 13-31 **Ⓛ**