

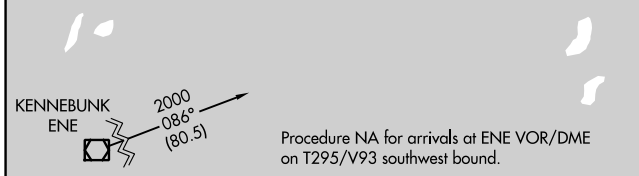
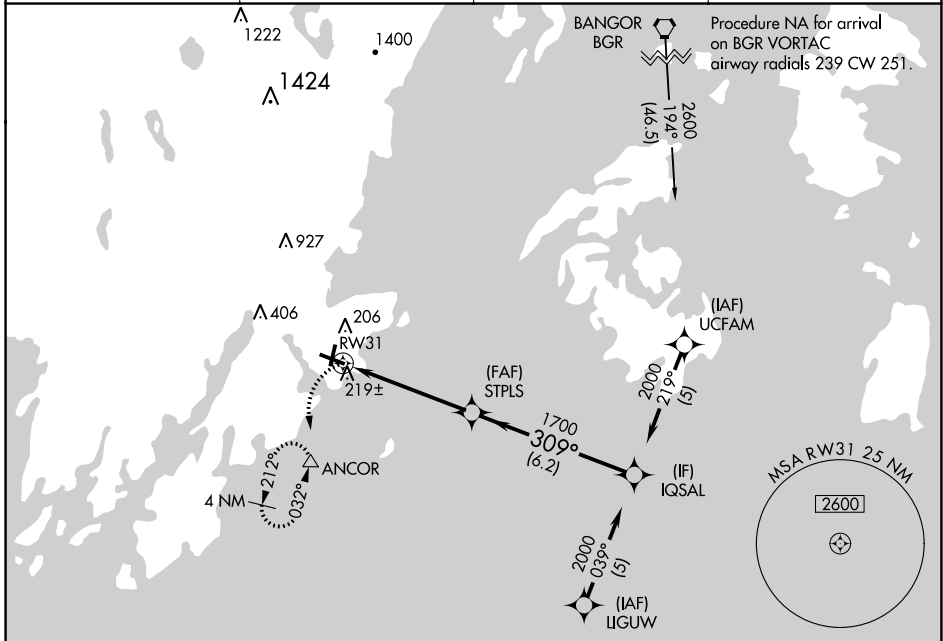
APP CRS	Rwy Idg	5412
309°	TDZE	55
	Apt Elev	55

RNAV (GPS) RWY 31

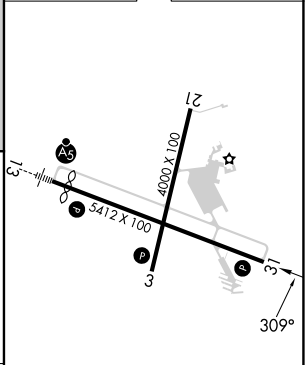
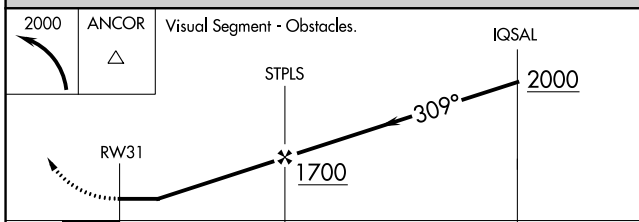
KNOX COUNTY RGNL (R.KD)

RNP APCH.		MISSED APPROACH: Climbing left turn to 2000 direct ANCOR and hold, continue climb-in-hold to 2000.
▽ ▲	Rwy 31 helicopter visibility reduction below ¾ SM NA.	

AWOS-3PT 119.025	PORTLAND APP CON ★ 120.4 299.2	CLNC DEL 123.8	UNICOM 123.05 (CTAF) 📻
----------------------------	--	--------------------------	---



ELEV	55	D	TDZE	55
------	----	----------	------	----



CATEGORY	A	B	C	D
LNVA MDA	480-1	425 (500-1)	480-1¼	425 (500-1¼)
C CIRCLING	580-1	525 (600-1)	720-1¾ 665 (700-1¾)	1140-3 1085 (1100-3)

- REIL Rwy 3 and 31 **📻**
- MIRL Rwy 3-21 **📻**
- HIRL Rwy 13-31 **📻**

NE-1, 28 NOV 2024 to 26 DEC 2024

NE-1, 28 NOV 2024 to 26 DEC 2024