

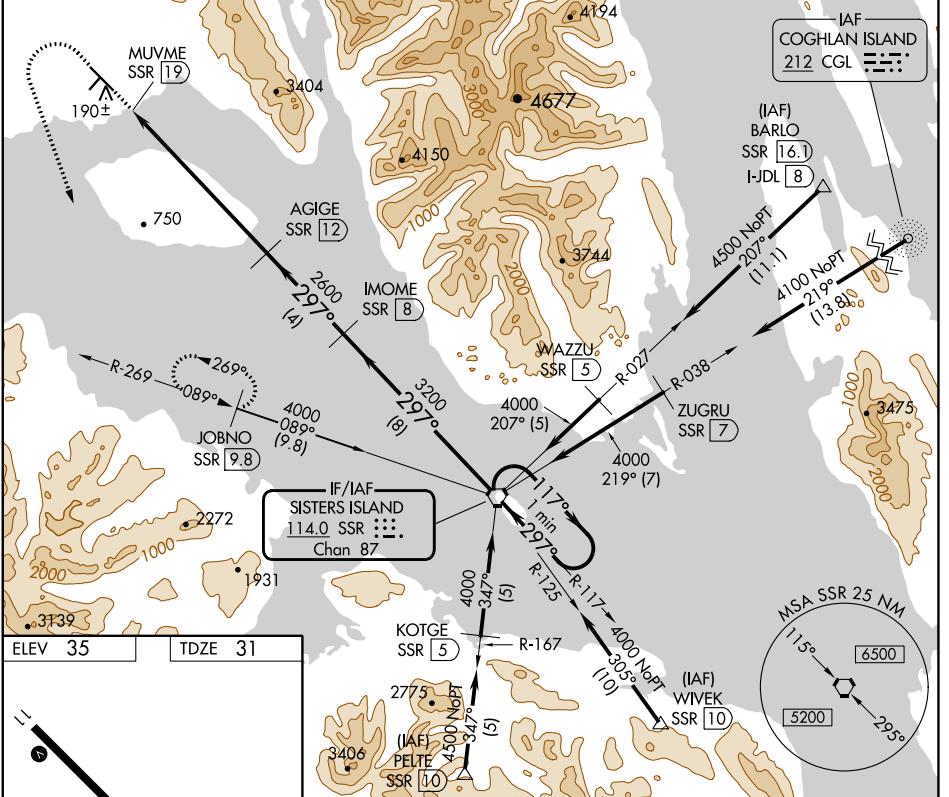
VORTAC SSR 114.0 Chan 87	APP CRS 297°	Rwy Idg 6720 TDZE 31 Apt Elev 35
--	------------------------	--

VOR/DME RWY 29

GUSTAVUS (GST)(PAGS)

⚠ Circling NA northeast of Rwy 11-29.
❄ -17°C
 MISSED APPROACH: Climb to 2000 then climbing left turn to 4000 on heading 140° and on SSR VORTAC R-269 to JOBNO/9.8 DME and hold.

AWOS-3P 125.9	ANCHORAGE CENTER 133.2 360.65	JUNEAU RADIO 122.65	CTAF 122.5
-------------------------	---	-------------------------------	----------------------



ELEV 35	TDZE 31
---------	---------

The diagram shows the runway layout. Runway 29 is 6720 feet long and 150 feet wide, oriented 297 degrees. Runway 11-29 is 3010 feet long and 60 feet wide, oriented 117 degrees. A star symbol indicates the runway end. A heading of 140 degrees is also shown.

2000 4000 hdg 140° SSR R-269 JOBNO VGS1 and descent angles not coincident (VGS1 Angle 3.00/TCH 39). IMOME SSR [8] VORTAC One Minute Holding Pattern	MUVME SSR [19] ≤ 2.96° TCH 55	AGIGE SSR [12]	297° → 4000 ← 297°	
	1 NM 7 NM 4 NM 8 NM	117° → 4000 ← 297°		
CATEGORY	A	B	C	D
S-29	1260-1¼ 1229 (1300-1¼)	1260-1½ 1229 (1300-1½)	1260-3	1229 (1300-3)
C CIRCLING	1260-1¼ 1225 (1300-1¼)	1260-1½ 1225 (1300-1½)	1260-3	1225 (1300-3)

AK, 31 OCT 2024 to 26 DEC 2024

AK, 31 OCT 2024 to 26 DEC 2024