

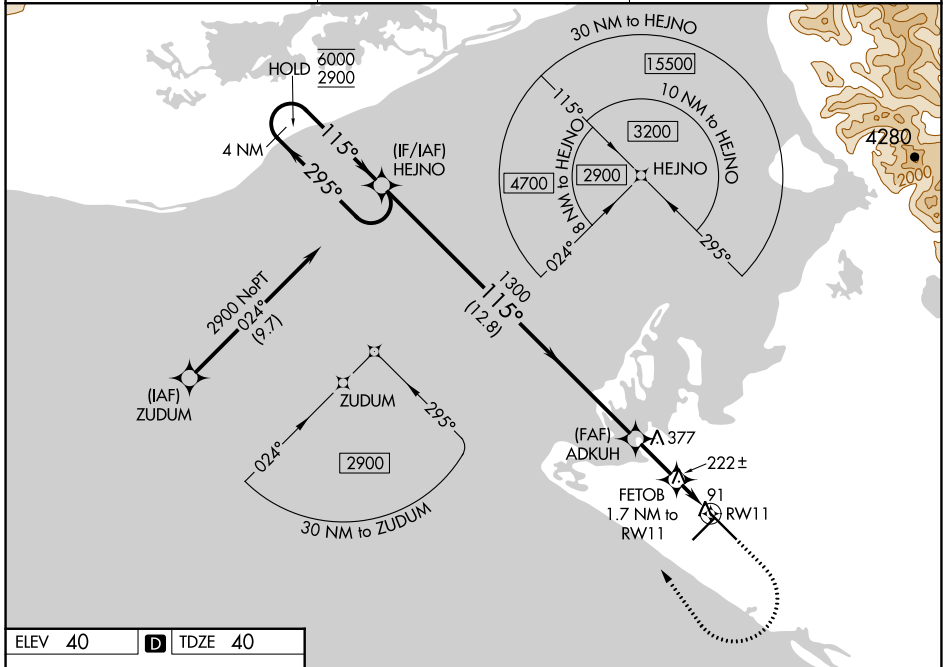
WAAS CH <b>86414</b> <b>W11A</b>	APP CRS <b>115°</b>	Rwy Idg TDZE Apt Elev	<b>7732</b> <b>40</b> <b>40</b>
--	------------------------	-----------------------------	---------------------------------------

# RNAV (GPS) RWY 11

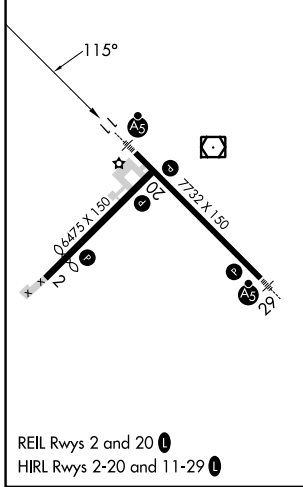
YAKUTAT (YAK) (PAYA)

RNP APCH - GPS.	MALSR	MISSED APPROACH: Climb to 600 then climbing right turn to 2900 direct HEJNO and hold.
<p><b>⚠</b> Circling Rwy 20 NA at night. When Yakutat altimeter setting not received, procedure NA. For uncompensated Baro-VNAV systems, LNAV/VNAV NA below -16° C or above 54° C.</p>		

ASOS <b>135.75</b>	ANCHORAGE CENTER <b>119.0 263.1</b>	JUNEAU RADIO <b>123.6 (CTAF) 0</b>
-----------------------	--	---------------------------------------



ELEV 40	<b>D</b>	TDZE 40
---------	----------	---------



	4 NM Holding Pattern	HEJNO	ADKUH	FETOB	HEJNO
	6000 2900	115°	1300	1.7 NM to RW11	600 2900 HEJNO
	GP 3.00° TCH 53	115°	1300	1.2 NM to RW11	
		12.8 NM	2.1 NM	0.5 1.2 NM	
CATEGORY	A	B	C	D	
LPV DA		240/24	200 (200-½)		
LNAV/VNAV DA		445/50	405 (500-1)		
LNAV MDA	480/24	440 (500-½)	480/40	440 (500-¾)	
<b>C</b> CIRCLING	520-1 480 (500-1)	540-1 500 (500-1)	820-2¼ 780 (800-2¼)	820-2½ 780 (800-2½)	

YAKUTAT, ALASKA  
Amdt 5 08SEP22

59°30'N-139°40'W

# YAKUTAT (YAK) (PAYA)

## RNAV (GPS) RWY 11

AK, 31 OCT 2024 to 26 DEC 2024

AK, 31 OCT 2024 to 26 DEC 2024