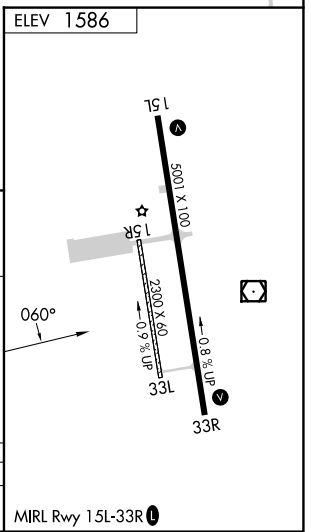
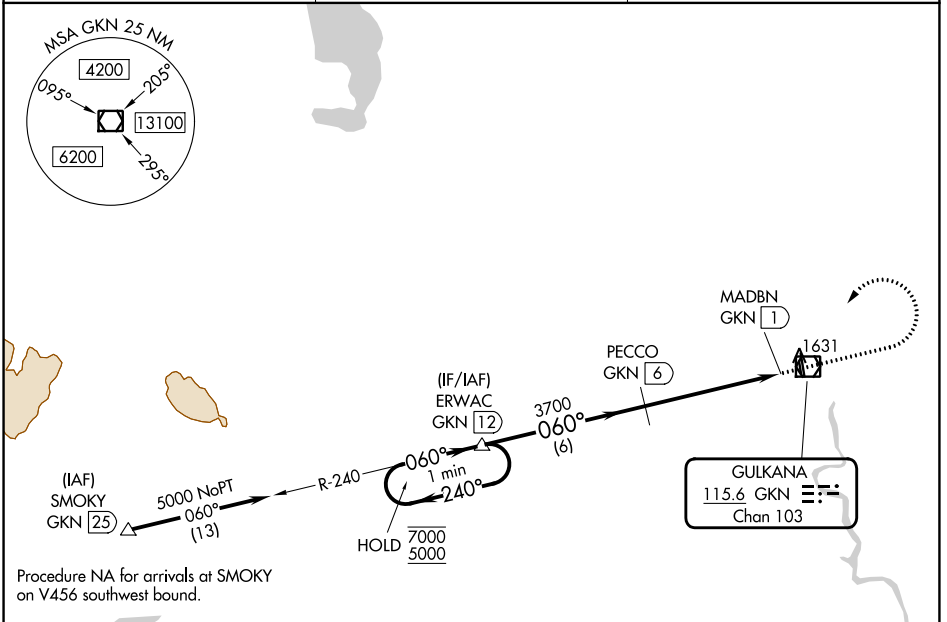


VOR/DME GKN 115.6 Chan 103	APP CRS 060°	Rwy Idg TDZE Apt Elev 1586	N/A N/A
--	------------------------	---	--------------------------

VOR-A
GULKANA (GKN) (PAGK)

DME required.	MISSED APPROACH: Climb to 3000 then climbing left turn to 5000 direct GKN VOR/DME and continue on GKN R-240 to ERWAC/GKN 12 DME and hold.
<p>⚠ Circling to Rwy 15R, Rwy 33L NA at night. Rwy 15R, 33L helicopter visibility reduction below 1 SM NA.</p>	

ASOS 134.85	ANCHORAGE CENTER 119.5 317.5	CTAF 122.9 0
-----------------------	--	------------------------



	ERWAC GKN 12	3000	5000	GKN	GKN R-240	ERWAC
	One Minute Holding Pattern	7000	5000	PECCO GKN 6	MADBN GKN 1	
		6 NM		5 NM		
CATEGORY	A	B	C	D		
CIRCLING	2060-1 474 (500-1)	2080-1 494 (500-1)	2080-1½ 494 (500-1½)	2200-2 614 (700-2)		MIRL Rwy 15L-33R 0

AK, 31 OCT 2024 to 26 DEC 2024

AK, 31 OCT 2024 to 26 DEC 2024