

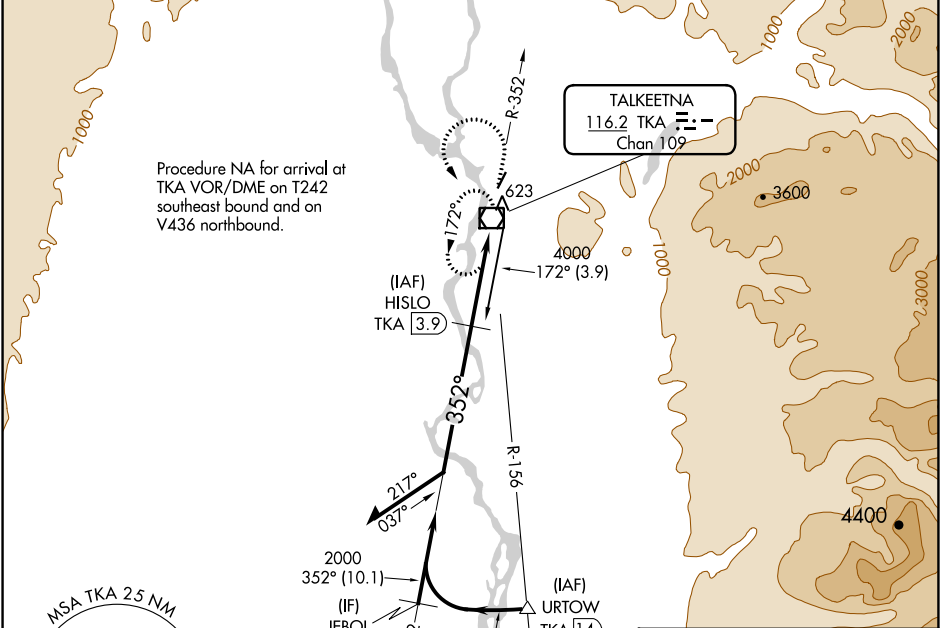
VOR/DME TKA 116.2 Chan 109	APP CRS 352°	Rwy ldg 3500 TDZE 363 Apt Elev 365
--	------------------------	---

VOR RWY 1

TALKEETNA (TKA)(PATK)

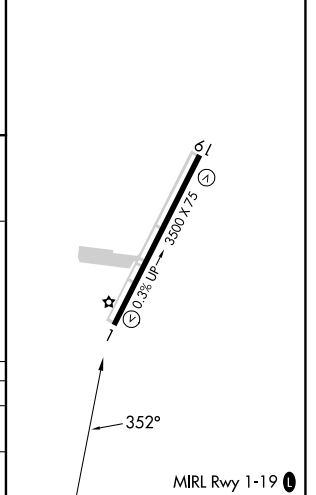
DME required.	<p>⚠ Circling NA east of Rwy 1-19. ⚠ Rwy 1 helicopter visibility reduction below 1 SM NA. ❄ -29°C Straight-in Rwy 1 NA at night, Circling Rwy 1 NA at night.</p>	MISSED APPROACH: Climb to 2100 on TKA VOR/DME R-352 then climbing left turn to 3200 direct TKA VOR/DME and hold.

AFIS 135.2	ANCHORAGE CENTER 125.55 254.3	TALKEETNA RADIO 123.6 (CTAF) 0	UNICOM 123.0
----------------------	---	--	------------------------



ELEV 365	TDZE 363
----------	----------

Visual Segment - Obstacles.			
Remain within 10 NM	HISLO TKA 3.9	2100	3200
2500	172°	TKA R-352	TKA
2000	352°	TKA VOR/DME	TKA 1.2
5.1 NM			
CATEGORY	A	B	D
S-1	1040-1	677 (700-1)	1040-1 ⁷ / ₈ 677 (700-1 ⁷ / ₈)
C CIRCLING	1040-1	675 (700-1)	1040-2 675 (700-2) 1200-2 ³ / ₄ 835 (900-2 ³ / ₄)



AK, 31 OCT 2024 to 26 DEC 2024

AK, 31 OCT 2024 to 26 DEC 2024