

COLD BAY, ALASKA

HI-VOR or TACAN RWY 15

VORTAC CDB 112.6 Chan 73	APCH CRS 145°	Rwy Idg 10,179 TDZE 75 Arprt Elev 100
--	-------------------------	--

AL-1241 [USAF]

COLD BAY (CDB) (PACD)

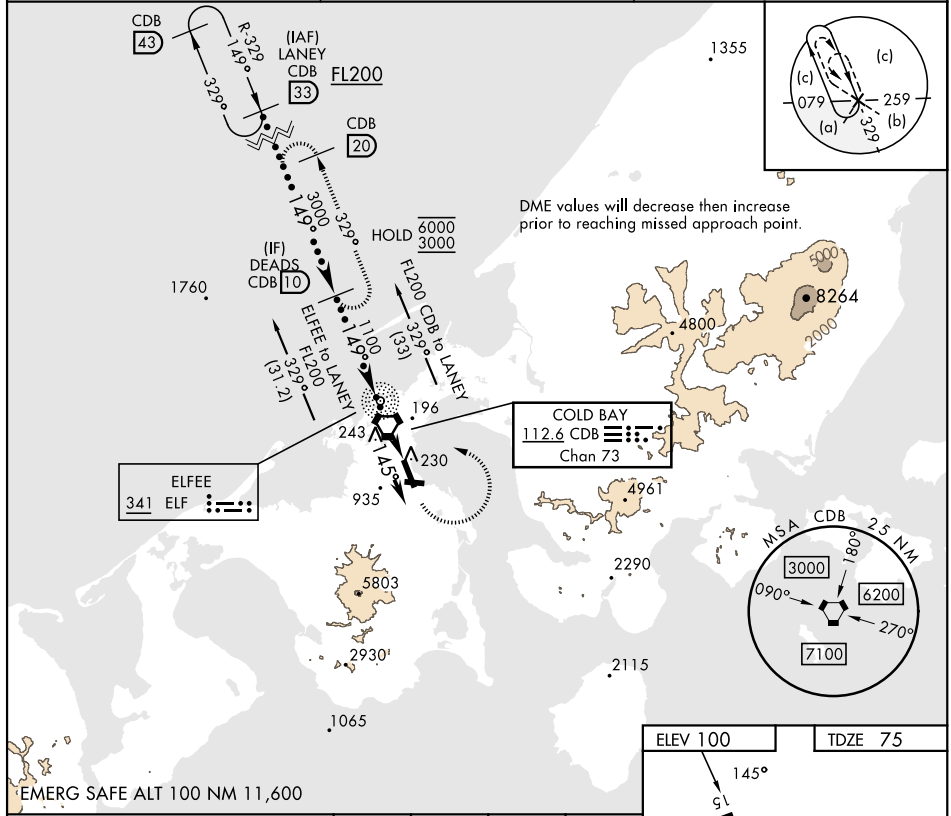
DME required

▼ * When ALS inop, increase vis to 1 3/8 miles.
** Circling not authorized SW of Rwy 15-33.



MISSED APPROACH: Climb to 1200, then climbing left turn to 3000 direct CDB VORTAC, then on CDB R-329 to DEADS/CDB 10 DME and hold.

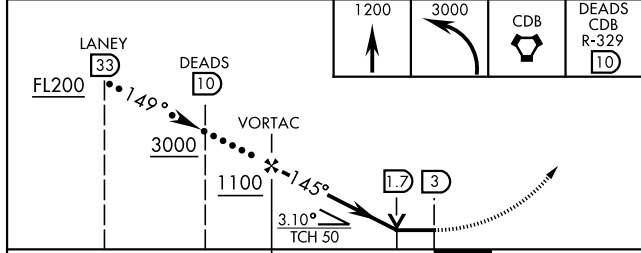
ANCHORAGE CENTER 118.5 278.3	COLD BAY RADIO 123.6 (CTAF) 0	ASOS 135.75
--	---	-----------------------



DME values will decrease then increase prior to reaching missed approach point.

AK, 31 OCT 2024 to 26 DEC 2024

AK, 31 OCT 2024 to 26 DEC 2024



ELEV 100	TDZE 75
----------	---------

CATEGORY	C	D	E
S-15*	540/50	465	(500-1)
CIRCLING**	560-1 1/2 460 (500-1 1/2)	860-2 1/2 760 (800-2 1/2)	940-3 840 (900-3)

HIRL all rwys 0

COLD BAY, ALASKA

55°12'N-162°44'W

COLD BAY (CDB) (PACD)

Amdt 5 02DEC21

HI-VOR or TACAN RWY 15