

LOC I-CDB 110.3	APP CRS 146°	Rwy Idg 10179 TDZE 75 Apt Elev 100
---------------------------	------------------------	---

ILS or LOC RWY 15

COLD BAY (CDB) (PACD)

DME required.

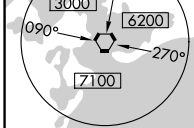
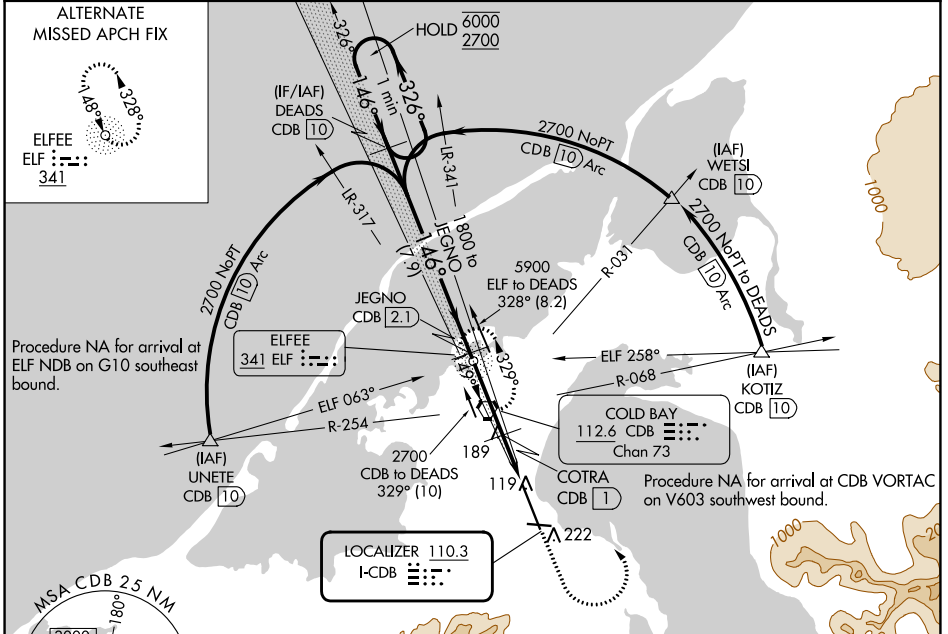
⚠ Circling NA for Cats B/C/D southwest of Rwy 15-33. DME from CDB VORTAC.

⚠ Simultaneous reception of I-CDB and CDB DME required. DME values will decrease then increase prior to reaching missed approach point. Circling NA for Cat A southwest of Rwy 15-33 at night. For inop ALS, increase S-LOC 15 Cats C and D visibility to RVR 5500. #RVR 1800 authorized with use of FD or AP or HUD to DA.

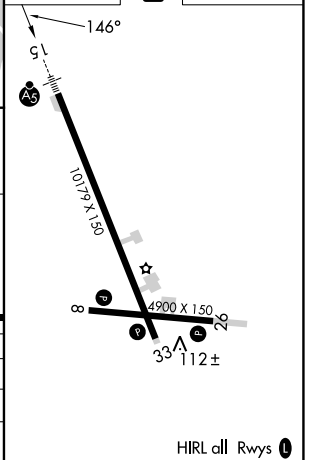
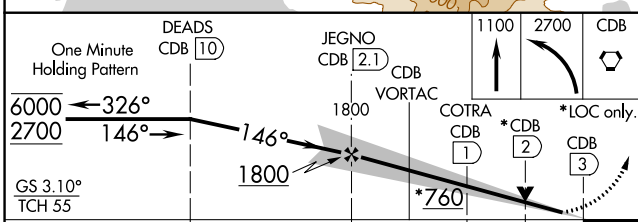
MALSRL

⚠ MISSED APPROACH: Climb to 1100 then climbing left turn to 2700 direct CDB VORTAC and hold, continue climb-in-hold to 2700.

ASOS 135.75	ANCHORAGE CENTER 118.5 278.3	COLD BAY RADIO 123.6 (CTAF)
-----------------------	--	---------------------------------------



ELEV 100	TDZE 75
----------	---------



CATEGORY	A	B	C	D
S-ILS 15#	275/24		200 (200-½)	
S-LOC 15	440/24	365 (400-½)	440/35	365 (400-¾)
CIRCLING	540-1 440 (500-1)	560-1 460 (500-1)	560-1½ 460 (500-1½)	860-2½ 760 (800-2½)

HIRL all Rwys

AK, 31 OCT 2024 to 26 DEC 2024

AK, 31 OCT 2024 to 26 DEC 2024