

(WETS12.WETS1) 23334

WETS1 TWO DEPARTURE

AL-1241 (FAA)

COLD BAY (CDB) (PACD)

COLD BAY, ALASKA

**TOP ALTITUDE:
ASSIGNED BY ATC**

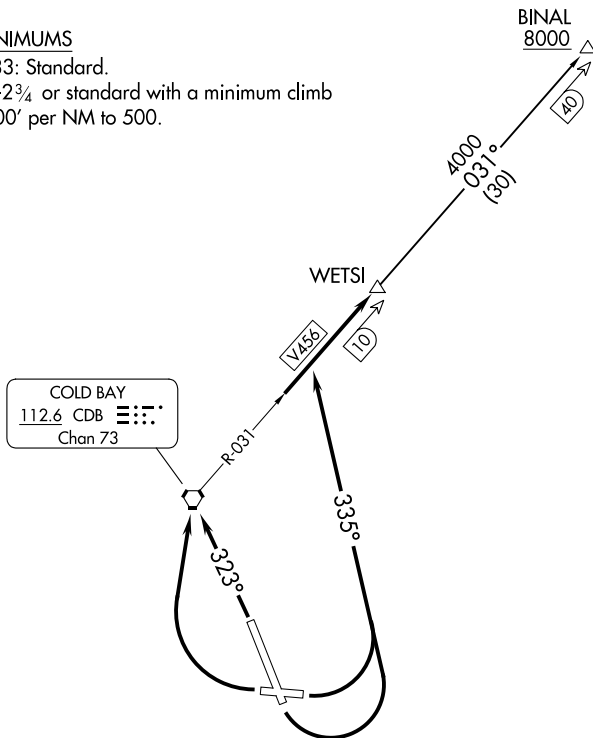
ANCHORAGE CENTER
118.5 278.3
COLD BAY RADIO
123.6

NOTE: DME required.

TAKEOFF MINIMUMS

Rwys 8, 15, 33: Standard.

Rwy 26: 900-2¾ or standard with a minimum climb of 400' per NM to 500.



NOTE: Chart not to scale.

DEPARTURE ROUTE DESCRIPTION

TAKEOFF RUNWAYS 8, 15: Climbing left turn heading 335°, thence

TAKEOFF RUNWAY 26: Climbing right turn direct CDB VORTAC, thence

TAKEOFF RUNWAY 33: Climb heading 323° direct CDB VORTAC, thence

. . . . intercept CDB VORTAC R-031 to join V456 northeast bound to WETS1 maintain assigned altitude.

BINAL TRANSITION (WETS12.BINAL): From over WETS1 on CDB R-031 to BINAL.

WETS1 TWO DEPARTURE

(WETS12.WETS1) 10SEP20

COLD BAY, ALASKA
COLD BAY (CDB) (PACD)

AK, 31 OCT 2024 to 26 DEC 2024

AK, 31 OCT 2024 to 26 DEC 2024