

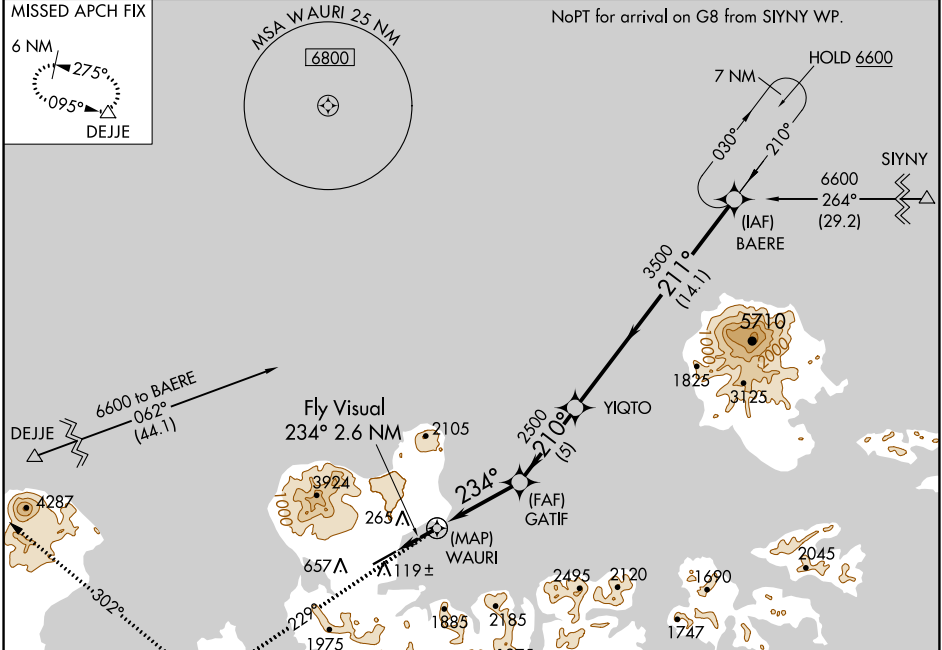
| | | |
|-------------|----------|-------------|
| APP CRS | Rwy Idg | 6190 |
| 234° | TDZE | 17 |
| | Apt Elev | 20 |

RNAV (GPS) RWY 23

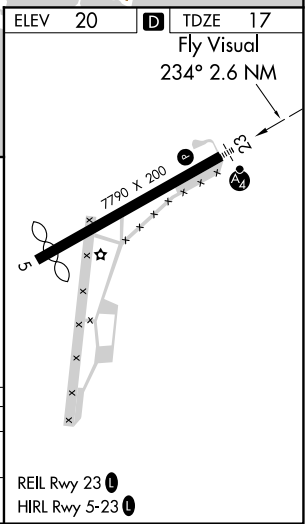
ADAK (ADK)(PADK)

| | | |
|---|------|--|
| RNP APCH-GPS. | MALS | MISSED APPROACH: Climb to 6600 on course 229° to XERIC, and right turn on course 302° to DEJJE and hold. |
| Circling not authorized at night. Circling NA northwest of Rwy 5-23. | | |

| | | |
|-------------------------|--|----------------------|
| AWOS-3P 134.5 | ANCHORAGE CENTER 126.4 254.3 | CTAF 122.9 |
|-------------------------|--|----------------------|



| | | | |
|------------------------|----------------------|---------------|-------------------|
| 6600 | XERIC | DEJJE | BAERE |
| crs 229° | | crs 302° | |
| Fly Visual 234° 2.6 NM | GATIF | YIQTO | 6600 |
| WAURI | 2500 | 3500 | Procedure Turn NA |
| | 5 NM | 5 NM | 14.1 NM |
| CATEGORY | A | B | C |
| LNAV MDA | 1220-3 1203 (1200-3) | | |
| CIRCLING | 1220-3 | 1200 (1200-3) | NA |



AK, 31 OCT 2024 to 26 DEC 2024

AK, 31 OCT 2024 to 26 DEC 2024