

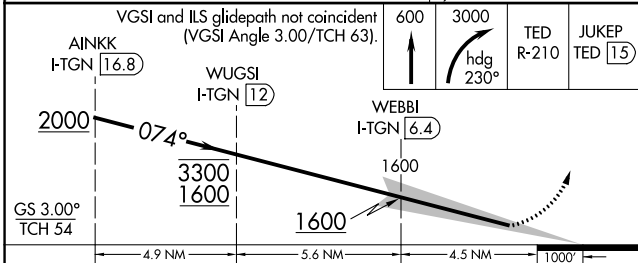
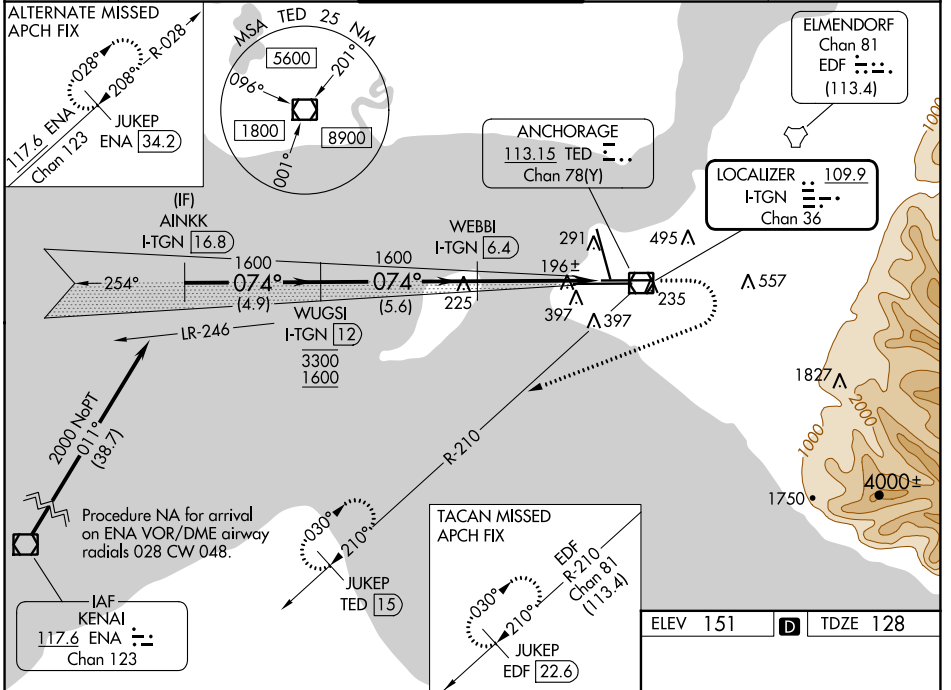
LOC/DME I-TGN 109.9 Chan 36	APP CRS 074°	Rwy Idg 10600 TDZE 128 Apt Elev 151
---	------------------------	--

ILS RWY 7L (SA CAT I & II)

TED STEVENS ANCHORAGE INTL (ANC)(PANC)

DME required.	MALSR	MISSED APPROACH: Climb to 600 then climbing right turn to 3000 on heading 230° and TED VOR/DME R-210 to JUKEP/TED 15 DME and hold. (TACAN aircraft climb to 600 then climbing right turn to 3000 on heading 230° on EDF TACAN R-210 to JUKEP/EDF 22.6 DME and hold).
SA CAT I: Requires specific OPSPEC, MSPEC or LOA approval. SA CAT II: Requires specific OPSPEC, MSPEC or LOA approval.		

D-ATIS 135.5	ANCHORAGE APP CON 118.6 290.5	ANCHORAGE TOWER 118.3 257.8	GND CON 121.9 338.25	CLNC DEL 119.4 323.1
------------------------	---	---------------------------------------	--------------------------------	--------------------------------



CATEGORY	A	B	C	D
S-ILS 7L	SA CAT I	RA 158/14	150	DA 278
S-ILS 7L	SA CAT II	RA 108/12	100	DA 228

SA CATEGORY I & II ILS - SPECIAL AIRCREW & AIRCRAFT CERTIFICATION REQUIRED

REIL Rwy 33
TDZ/CL Rwys 7L and 7R
HIRL all Rwys

AK, 31 OCT 2024 to 26 DEC 2024

AK, 31 OCT 2024 to 26 DEC 2024