

RNAV (RNP) Z RWY 7R

TED STEVENS ANCHORAGE INTL (ANC) (PANC)

| | | |
|-------------|----------|--------------|
| APP CRS | Rwy Idg | 12400 |
| 074° | TDZE | 132 |
| | Apt Elev | 151 |

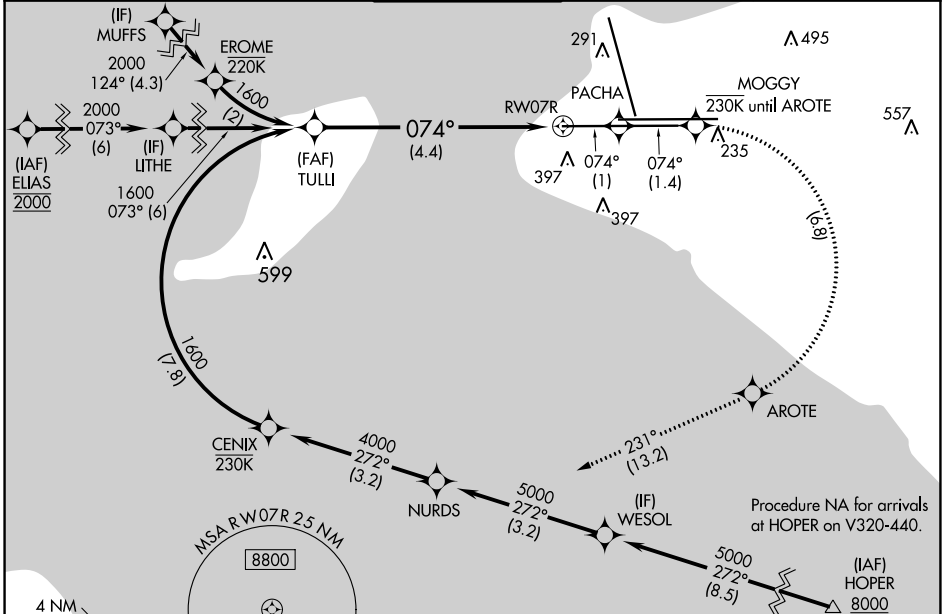
RNP AR APCH, RF required.

⚠ Missed approach requires RNP less than 1.0.
❄ -21°C For uncompensated Baro-VNAV systems, procedure NA below -18°C (0°F) or above 54°C (130°F).
 For inop ALS, increase RNP 0.30 all Cats visibility to 1 3/8 SM.

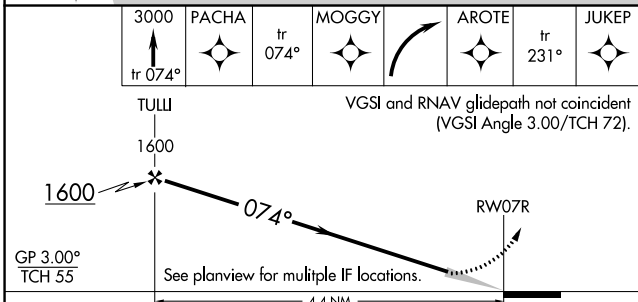
ALSF-2

MISSED APPROACH: Climb to 3000 on the missed approach route to JUKEP and hold.

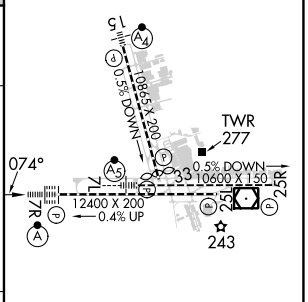
| | | | | |
|--------------|--------------------|--------------------|---------------------|--------------------|
| D-ATIS | ANCHORAGE APP CON | ANCHORAGE TOWER | GND CON | CLNC DEL |
| 135.5 | 118.6 290.5 | 118.3 257.8 | 121.9 338.25 | 119.4 323.1 |



RADAR REQUIRED



| | |
|----------|-------------------|
| ELEV 151 | D TDZE 132 |
|----------|-------------------|



| | | | | |
|-------------|--------------------|---|---|---|
| CATEGORY | A | B | C | D |
| RNP 0.30 DA | 562/50 430 (500-1) | | | |

AUTHORIZATION REQUIRED

REIL Rwy 33
 TDZ/CL Rwys 7L and 7R
 HIRL all Rwys

RNAV (RNP) Z RWY 7R

AK, 31 OCT 2024 to 26 DEC 2024

AK, 31 OCT 2024 to 26 DEC 2024