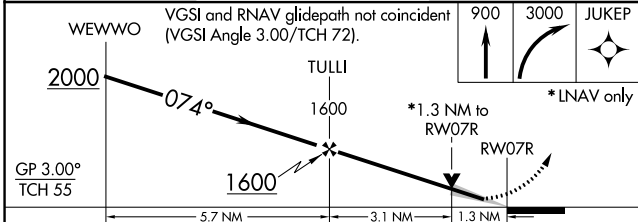
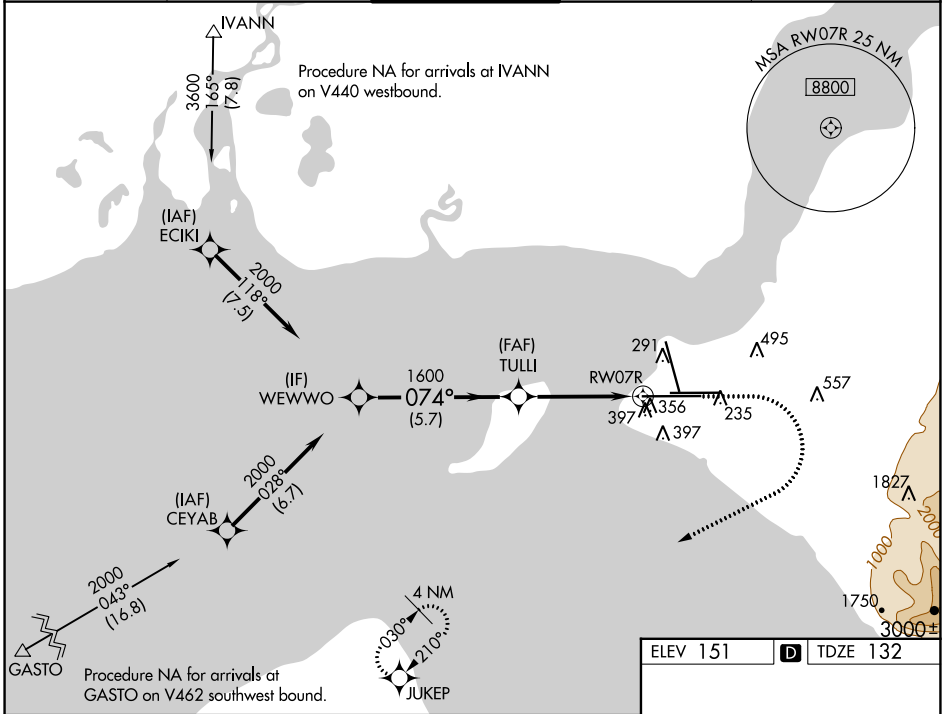


| | | |
|--|------------------------|--|
| WAAS CH 81815 W07A | APP CRS 074° | Rwy Idg 12400 TDZE 132 Apt Elev 151 |
|--|------------------------|--|

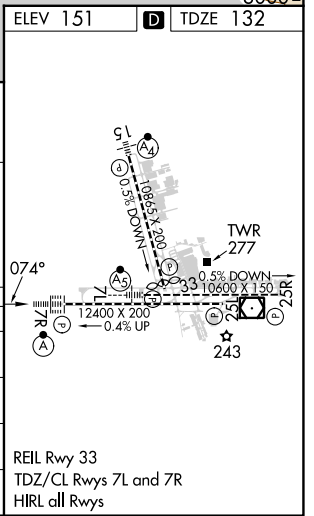
RNAV (GPS) Y RWY 7R

TED STEVENS ANCHORAGE INTL (ANC) (PANC)

| | | | | |
|---|---|---|--------------------------------|--------------------------------|
| RNP APCH. ▼ For uncompensated Baro-VNAV systems, LNAV/VNAV NA below -18°C or above 54°C. For inop ALS, increase LNAV/VNAV all Cats and LNAV Cat C/D visibility to 1 3/8 SM. ▲ -21°C | ALSIF-2 A | MISSED APPROACH: Climb to 900 then climbing right turn to 3000 direct JUKEP and hold. | | |
| D-ATIS 135.5 | ANCHORAGE APP CON 118.6 290.5 | ANCHORAGE TOWER 118.3 257.8 | GND CON 121.9 338.25 | CLNC DEL 119.4 323.1 |



| CATEGORY | A | B | C | D |
|--------------|----------------------|---|---|---|
| LPV DA | 332/18 | | 200 (200-1/2) | |
| LNAV/VNAV DA | 648/55 | | 516 (500-1) | |
| LNAV MDA | 620/24 488 (500-1/2) | | 620/50 488 (500-1) | |
| CIRCLING | 700-1 549 (600-1) | | 800-1 3/4 649 (700-1 3/4) 920-2 1/2 769 (800-2 1/2) | |



AK, 31 OCT 2024 to 26 DEC 2024

AK, 31 OCT 2024 to 26 DEC 2024