

# TURNAGAIN EIGHT DEPARTURE

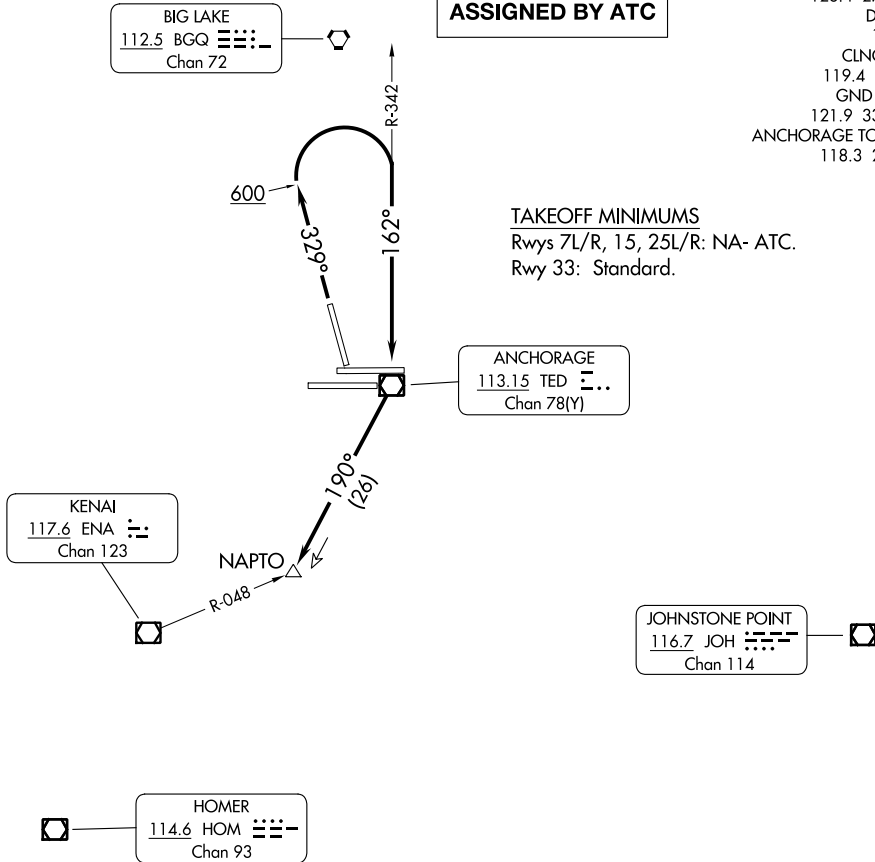
TED STEVENS ANCHORAGE INTL (ANC) (PANC)  
AL-1500 (FAA) ANCHORAGE, ALASKA

**TOP ALTITUDE:  
ASSIGNED BY ATC**

ANCHORAGE DEP CON 126.4 270.25  
 D-ATIS 135.5  
 CLNC DEL 119.4 323.1  
 GND CON 121.9 338.25  
 ANCHORAGE TOWER 118.3 257.8

### TAKEOFF MINIMUMS

Rwys 7L/R, 15, 25L/R: NA- ATC.  
Rwy 33: Standard.



NOTE: RADAR required.  
NOTE: Do not exceed 200K until TED VOR/DME.

NOTE: Chart not to scale.

### DEPARTURE ROUTE DESCRIPTION

TAKEOFF RUNWAY 33: Climb on heading 329° to 600, then climbing right turn to 2000 on TED R-342 to TED VOR/DME, then on TED R-190 to NAPTO. Maintain ATC assigned altitude. Expect RADAR vectors to assigned route. Expect further clearance to filed altitude within 10 minutes after departure.

# TURNAGAIN EIGHT DEPARTURE

ANCHORAGE, ALASKA  
TED STEVENS ANCHORAGE INTL (ANC) (PANC)

AK, 31 OCT 2024 to 26 DEC 2024

AK, 31 OCT 2024 to 26 DEC 2024