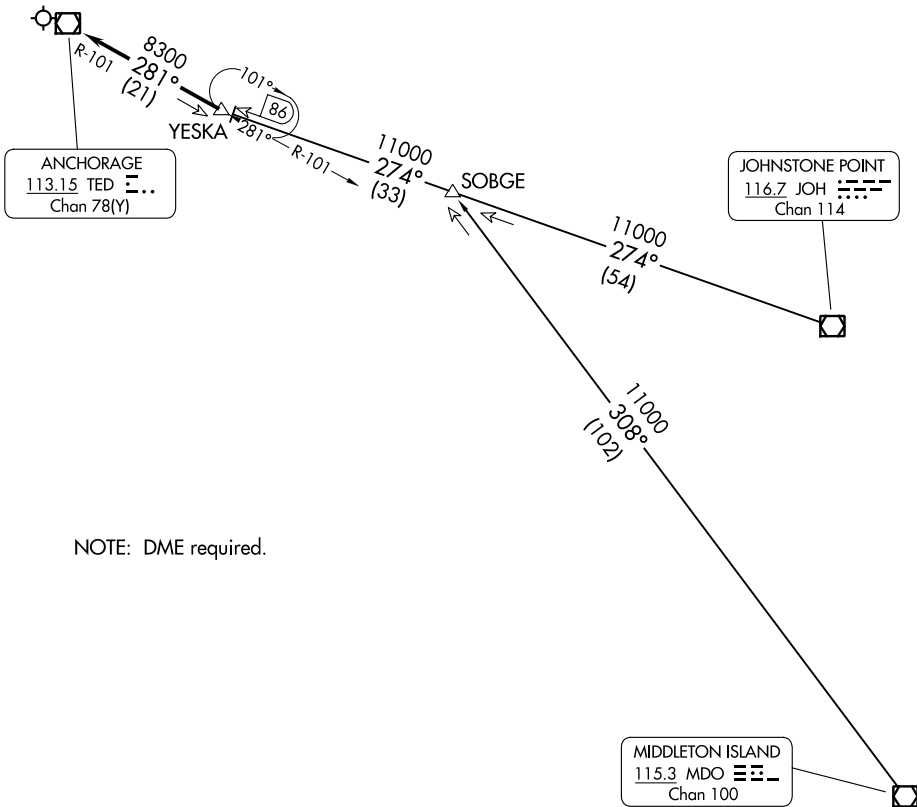


(YESKA.YESKA6) 24025  
**YESKA SIX ARRIVAL**

TED STEVENS ANCHORAGE INTL (ANC)(PANC)  
 AL-1500 (FAA) ANCHORAGE, ALASKA

ANCHORAGE APP CON  
 126.4 270.25  
 ANC/PANC D-ATIS  
 135.5  
 MRI/PAMR ATIS  
 124.25  
 PAED ATIS \*  
 124.3 273.5



NOTE: DME required.

NOTE: Chart not to scale.

**ARRIVAL ROUTE DESCRIPTION**

JOHNSTONE POINT TRANSITION (JOH.YESKA6): From over JOH VOR/DME on JOH R-274 to YESKA. Thence. . . .

MIDDLETON ISLAND TRANSITION (MDO.YESKA6): From over MDO VOR/DME on MDO R-308 to SOBGE, then on JOH R-274 to YESKA. Thence. . . .

. . . .From over YESKA on TED R-101 to TED VOR/DME.  
 Expect RADAR vectors to final approach course after YESKA.

**YESKA SIX ARRIVAL**  
 (YESKA.YESKA6) 15OCT15

ANCHORAGE, ALASKA  
 TED STEVENS ANCHORAGE INTL (ANC)(PANC)

AK, 31 OCT 2024 to 26 DEC 2024

AK, 31 OCT 2024 to 26 DEC 2024