

MILTON, FLORIDA

# TACAN RWY 32

TACAN NGS Chan <b>63</b>	APCH CRS <b>322°</b>	Rwy ldg TDZE Arprt Elev <b>6002</b> <b>172</b> <b>177</b>
-----------------------------	-------------------------	--

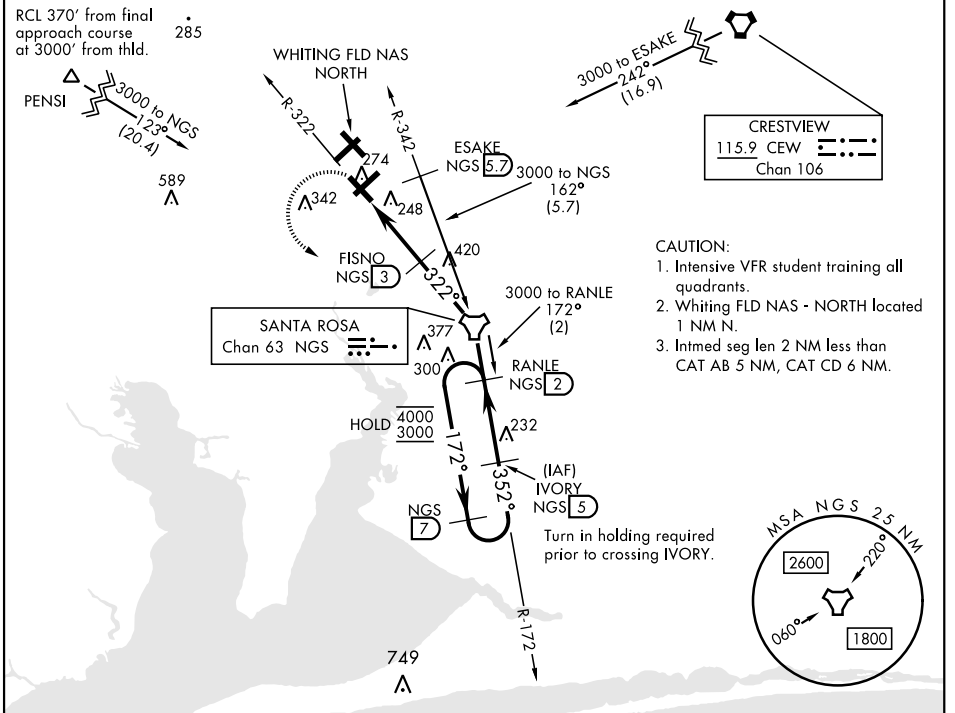
[USN]

WHITING FLD NAS - SOUTH (KNDZ)

▼ \* When ALS inop, increase vis to 1 mile.  
 \*\* Circling not authorized N of Rwy 14 and 23.

MALSR MISSED APPROACH: Climb to 600, then climbing left turn to 3000 direct NGS TACAN. Then via R-172 to RANLE and hold. Continue climb in hold. Contact Pensacola APP CON.

ATIS ★ <b>273.575</b>	PENSACOLA APP CON <b>124.85 235.775</b>	SOUTH WHITING TOWER ★ <b>123.075 348.675</b>	GND CON <b>317.65</b>	CLNC DEL <b>355.6</b>	ASR/ PAR
--------------------------	--	---	--------------------------	--------------------------	-------------

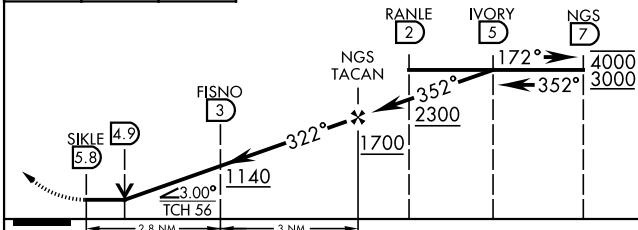
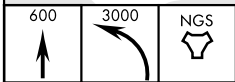


SE-3, 28 NOV 2024 to 26 DEC 2024

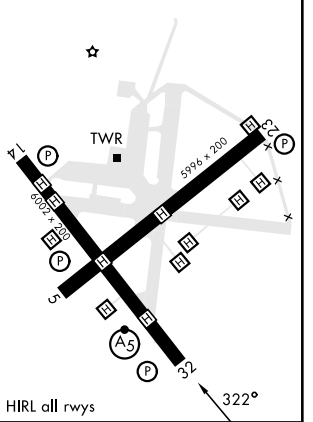
SE-3, 28 NOV 2024 to 26 DEC 2024

EMERG SAFE ALT 100 NM 3500

ELEV 177	TDZE 172
----------	----------



CATEGORY	A	B	C	D
S-32 *	540-1/2 368 (400-1/2)	640-1/2	540-5/8 368 (400-5/8)	740-2
** CIRCLING	580-1 403 (500-1)	640-1 463 (500-1)	660-1 1/2 483 (500-1 1/2)	740-2 563 (600-2)



MILTON, FLORIDA  
Amdt 6 28DEC23

30° 42' N-87° 01' W

WHITING FLD NAS - SOUTH (KNDZ)

# TACAN RWY 32