

LOC/DME I-ROG 111.5 Chan 52	APP CRS 198°	Rwy Idg 6011 TDZE 1354 Apt Elev 1359
---	------------------------	---

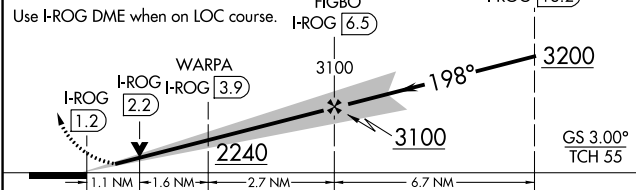
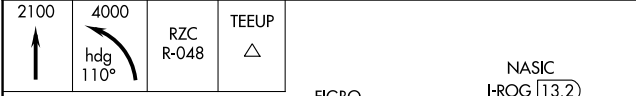
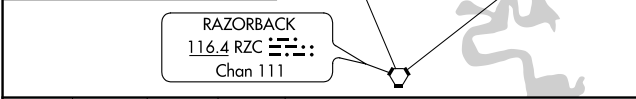
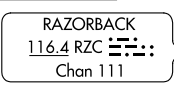
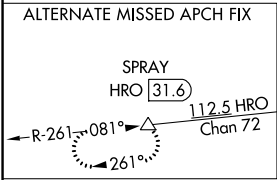
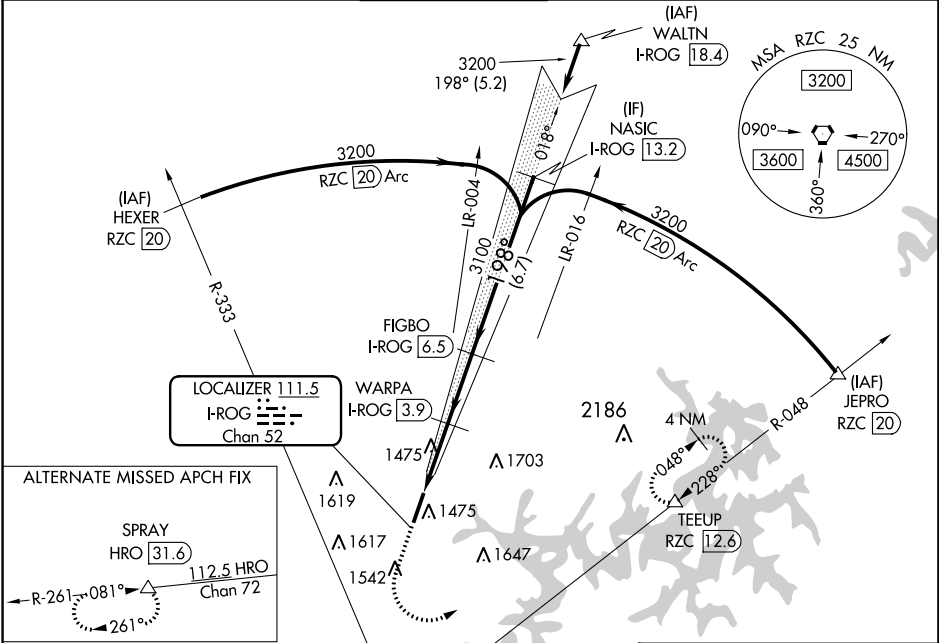
ILS or LOC RWY 20

ROGERS EXEC - CARTER FLD (ROG)

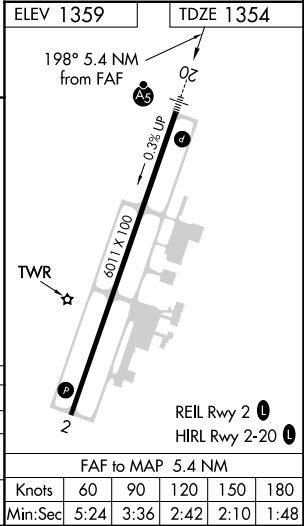
DME required.
Autopilot coupled approach NA below 1632.

MALSR
MISSED APPROACH: Climb to 2100 then climbing left turn to 4000 on heading 110° and RZC VORTAC R-048 to TEEUP/RZC VORTAC 12.6 DME and hold.

AWOS-3PT 134.375	RAZORBACK APP CON * 126.6 305.2	ROGERS TOWER * 119.375 (CTAF) 0	GND CON 118.0	CLNC DEL 121.75	CLNC DEL 121.75 (When twr closed)
----------------------------	---	--	-------------------------	---------------------------	--



CATEGORY	A	B	C	D
S-ILS 20	1554-1/2 200 (200-1/2)			
S-LOC 20	1740-1/2 386 (400-1/2)	1740-5/8 386 (400-5/8)		
CIRCLING	1840-1 481 (500-1)	2020-1 3/4 661 (700-1 3/4)	2020-2 661 (700-2)	



SC-1, 28 NOV 2024 to 26 DEC 2024

SC-1, 28 NOV 2024 to 26 DEC 2024