

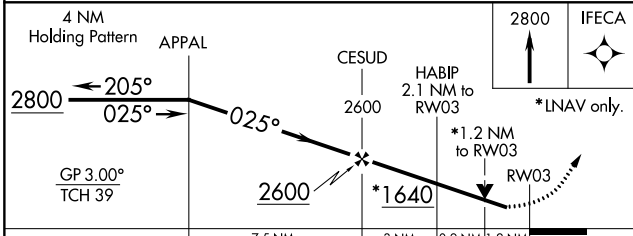
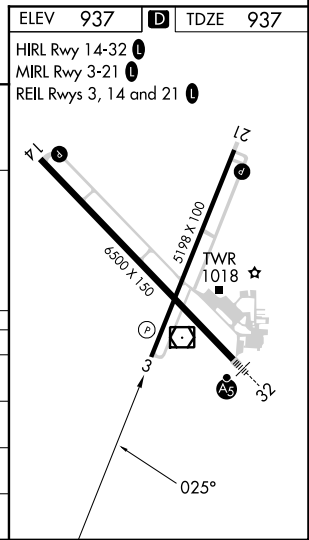
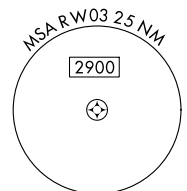
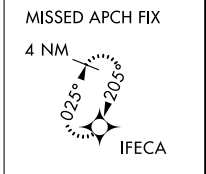
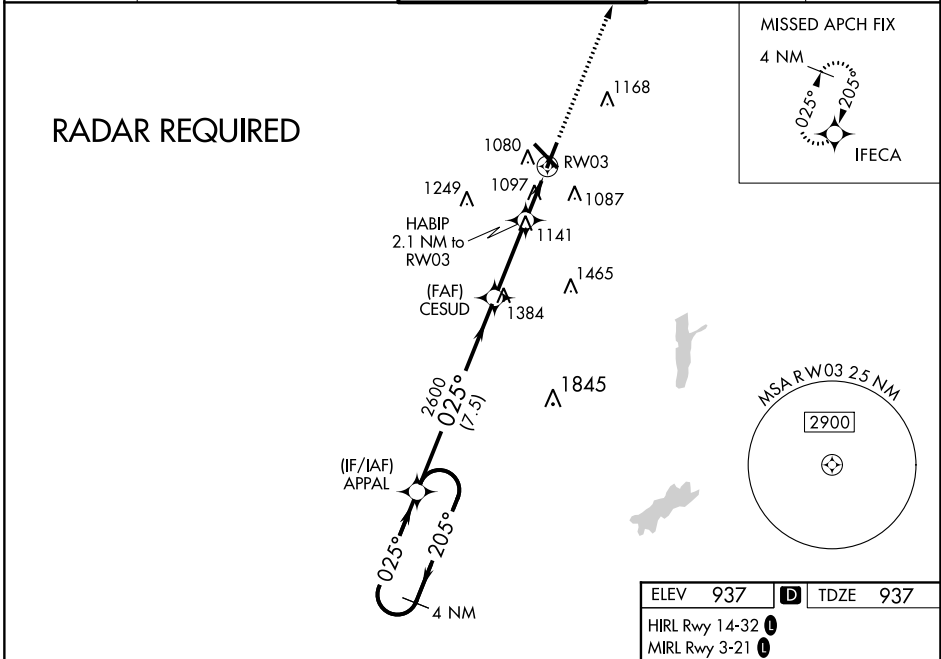
WAAS CH 78237 W03A	APP CRS 025°	Rwy Idg 5197 TDZE 937 Apt Elev 937
---------------------------------	------------------------	---

RNAV (GPS) RWY 3
DELAWARE COUNTY RGNL (MIE)

⚠ For uncompensated Baro-VNAV systems, LNAV/VNAV NA below -20°C (-4°F) or above 54°C (130°F). DME/DME RNP-0.3 NA. When local altimeter setting not received, use Fort Wayne Intl altimeter setting and increase all DA 121 feet and all MDA 140 feet; increase LPV all Cats and LNAV Cats C/D visibility 3/8 mile, LNAV/VNAV all Cats visibility 7/8 mile and Circling Cats C/D visibility 1/2 mile. Baro-VNAV NA when using Fort Wayne Intl altimeter setting. Helicopter visibility reduction below 3/4 SM NA.

MISSED APPROACH:
Climb to 2800 direct IFECA and hold.

ATIS 133.25	INDIANAPOLIS APP CON 120.65 317.8	MUNCIE TOWER ★ 120.1 (CTAF) 0	GND CON 121.9	UNICOM 122.95
-----------------------	---	---	-------------------------	-------------------------



CATEGORY	A	B	C	D
LPV DA	1190-7/8		253 (300-7/8)	
LNAV/VNAV DA	1412-1 5/8		475 (500-1 5/8)	
LNAV MDA	1360-1	423 (500-1)	1360-1 1/4	423 (500-1 1/4)
C CIRCLING	1460-1	523 (600-1)	1500-1 1/2 563 (600-1 1/2)	1600-2 663 (700-2)

EC-2, 28 NOV 2024 to 26 DEC 2024

EC-2, 28 NOV 2024 to 26 DEC 2024