

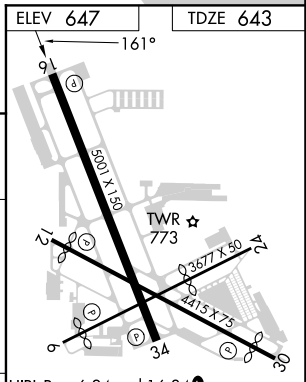
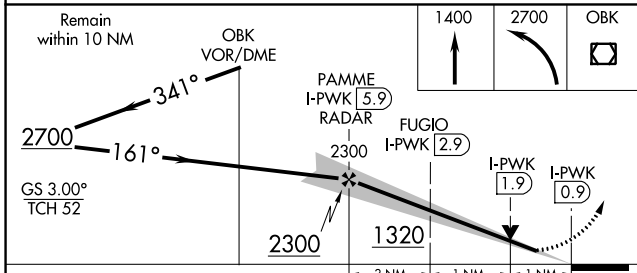
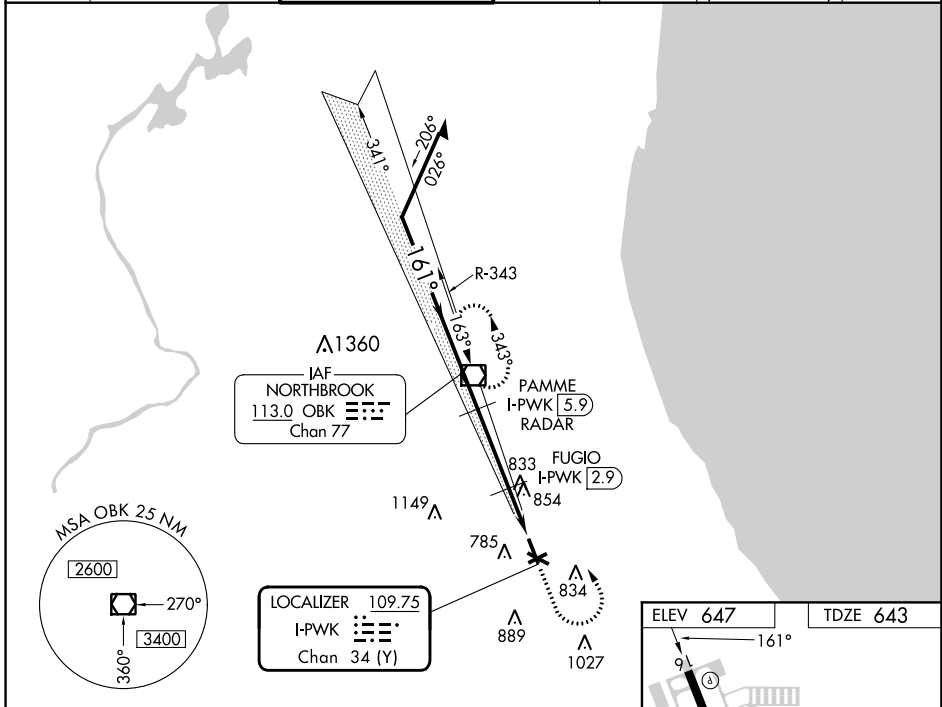
LOC/DME I-PWK <b>109.75</b> Chan <b>34</b> (Y)	APP CRS <b>161°</b>	Rwy Idg TDZE Apt Elev	<b>5001</b> <b>643</b> <b>647</b>
--	------------------------	-----------------------------	---

# ILS or LOC RWY 16

CHICAGO EXEC (PWK)

DME required.		MISSED APPROACH: Climb to 1400 then climbing left turn to 2700 direct OBK VOR/DME and hold, continue climb-in-hold to 2700.			
<p>⚠ Circling Rwy 6, 12, 24, 30 NA at night. Rwy 16 helicopter visibility reduction below 3/4 SM NA.</p>					

ATIS <b>124.2</b>	CHICAGO APP CON <b>120.55 306.925</b>	EXECUTIVE TOWER ★ <b>119.9</b> (CTAF) <b>0</b>	GND CON <b>121.7</b>	CLNC DEL <b>124.7</b>	CLNC DEL <b>124.7</b> (When twr closed)	UNICOM <b>122.95</b>
----------------------	--	---	-------------------------	--------------------------	---	-------------------------



REMAIN within 10 NM	OBK VOR/DME	1400	2700	OBK
2700	341°	2300	1320	
GS 3.00°	TCH 52			
		3 NM	1 NM	1 NM
CATEGORY	A	B	C	D
S-ILS 16		927-7/8	284 (300-7/8)	
S-LOC 16		1020-1	377 (400-1)	
Ⓢ CIRCLING	1140-1 493 (500-1)	1160-1 513 (600-1)	1200-1½ 553 (600-2)	1460-2¾ 813 (900-2¾)

HIRL Rwy 6-24 and 16-34 <b>0</b>	
MIRL Rwy 12-30 <b>0</b>	
REIL Rwys 12 and 30	
REIL Rwys 16 and 34 <b>0</b>	
RLS Rwy 16 <b>0</b>	
FAF to MAP 5 NM	
Knots	60 90 120 150 180
Min:Sec	5:00 3:20 2:30 2:00 1:40

EC-3, 28 NOV 2024 to 26 DEC 2024

EC-3, 28 NOV 2024 to 26 DEC 2024