

WAAS CH 65639 W19A	APP CRS 184°	Rwy Idg TDZE Apt Elev	4003 620 620
----------------------------------------	------------------------	-----------------------------	-----------------------------------------

RNAV (GPS) RWY 19

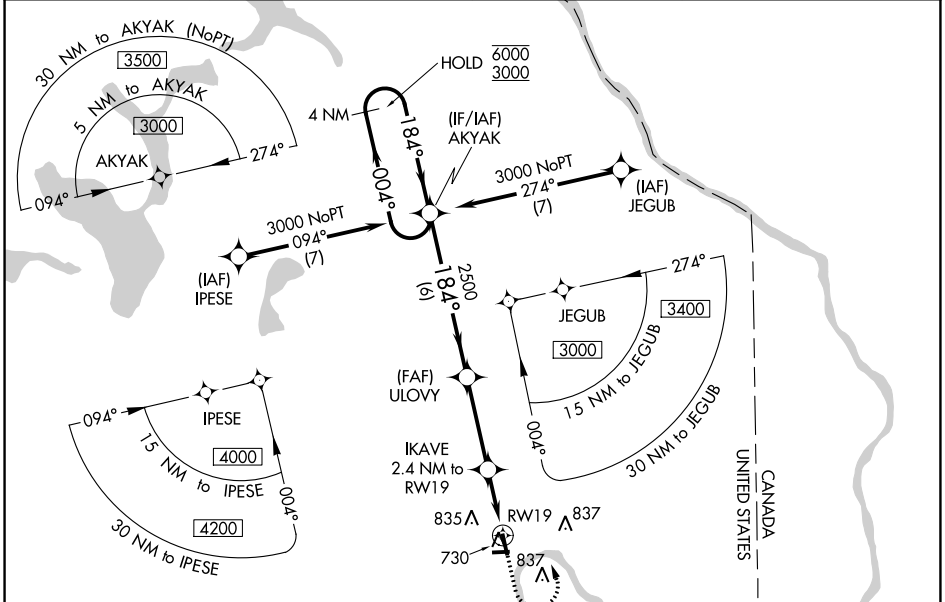
CARIBOU MUNI (CAR)

RNP APCH.

▼ Baro-VNAV and VDP NA when using Presque Isle altimeter setting. Rwy 19 helicopter visibility reduction below 3/4 SM NA. For uncompensated Baro-VNAV systems, LNAV/VNAV NA below -21°C or above 54°C. Circling Rwy 1, 11, 29 NA at night. When local altimeter setting not received, use Presque Isle altimeter setting and increase all DAs 49 feet and all MDAs 60 feet. Increase LNAV Cats C, D visibility 1/8 SM and Circling Cat D visibility 1/4 SM.

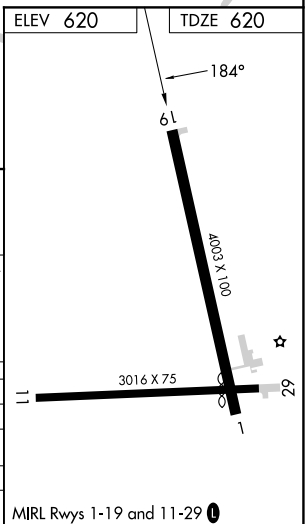
MISSED APPROACH:
Climb to 1300 then climbing left turn to 3000 direct AKYAK and hold.

ASOS 135.125	BOSTON CENTER 124.75 239.05	CLNC DEL 124.75	UNICOM 122.8 (CTAF) 0
------------------------	---------------------------------------	---------------------------	---------------------------------



NE-1, 28 NOV 2024 to 26 DEC 2024

NE-1, 28 NOV 2024 to 26 DEC 2024



4 NM Holding Pattern	AKYAK	ULOYV	IKAVE	1300	3000	AKYAK
6000 ← 004°	184° →	2500	2.4 NM to RWY 19	↑	↶	✧
3000	184°	2500	*1.4 NM to RWY 19			*LNAV only.
GP 3.00°		*1420				
TCH 40						
	6 NM	3.4 NM	1.4 NM	1 NM		

CATEGORY	A	B	C	D
LPV DA		870-1	250 (300-1)	
LNAV/VNAV DA		894-1	274 (300-1)	
LNAV MDA		980-1	360 (400-1)	
☑ CIRCLING	1140-1	520 (600-1)	1140-1 1/2 520 (600-1 1/2)	1400-2 1/2 780 (800-2 1/2)

MIRL Rwy 1-19 and 11-29 0