


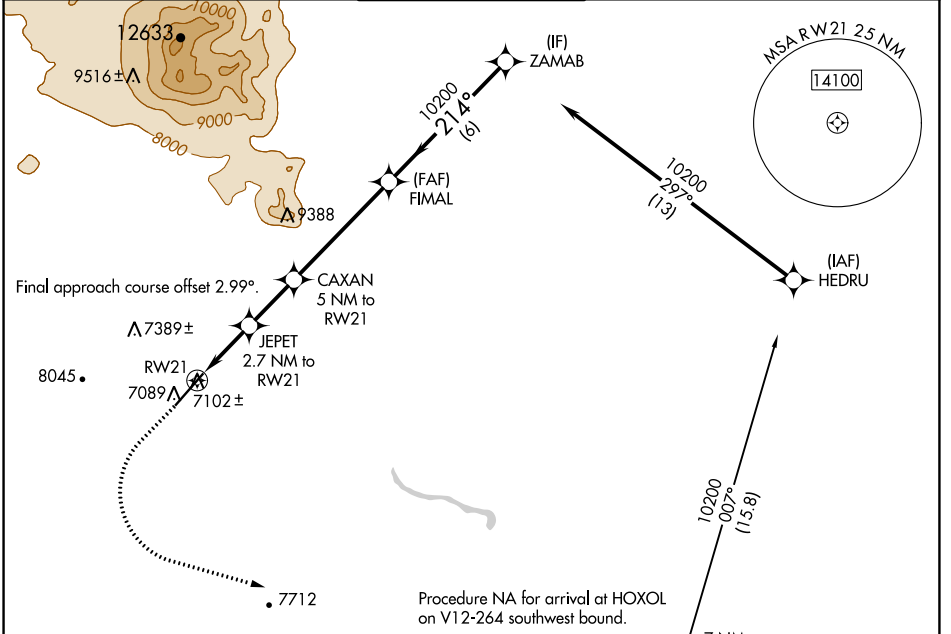
WAAS CH 99341 W21A	APP CRS 214°	Rwy Idg TDZE Apt Elev	7000 7003 7014
--	------------------------	-----------------------------	---

RNAV (GPS) RWY 21

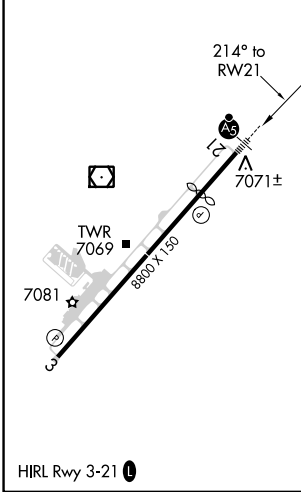
FLAGSTAFF PULLIAM (F.L.G)

<p>▼ For uncompensated Baro-VNAV systems, LNAV/VNAV NA below -19 °C (2°F) or above 44°C (111°F). DME/DME RNP-0.3 NA. ▲ For inop ALS, increase LPV all Cats visibility to ¾ SM.</p>	<p>MALSR </p>	<p>MISSED APPROACH: Climb to 7500 then climbing left turn to 10800 direct HOXOL and hold.</p>
---	---	---

ATIS 125.8	PHOENIX APP CON 126.375 236.775	FLAGSTAFF TOWER ★ 134.55 (CTAF) 239.25	GND CON 121.9	UNICOM 122.95
----------------------	---	--	-------------------------	-------------------------



ELEV 7014	D	TDZE 7003
-----------	----------	-----------



	7500	10800	HOXOL		FIMAL	ZAMAB
	↑	↶	△		10200	10200
	*LNAV only		JEPET 2.7 NM to RWY 21	CAXAN 5 NM to RWY 21	10200	10200
	1 NM to RWY 21		RWY 21	8640	214°	10200
	7900*		8640*	10200	GP 3.00°	TCH 52
	1 NM		1.7 NM	2.3 NM	4.9 NM	6 NM
CATEGORY	A		B	C	D	
LPV DA			7258-½	255 (300-½)		
LNAV/VNAV DA			7319-5/8	316 (400-¾)		
LNAV MDA	7360-½		357 (400-½)		7360-5/8 357 (400-¾)	
C CIRCLING	7520-1 506 (600-1)		7560-1 546 (600-1)		8100-3 1086 (1100-3)	
					8560-3 1546 (1600-3)	

SW-4, 28 NOV 2024 to 26 DEC 2024

SW-4, 28 NOV 2024 to 26 DEC 2024