

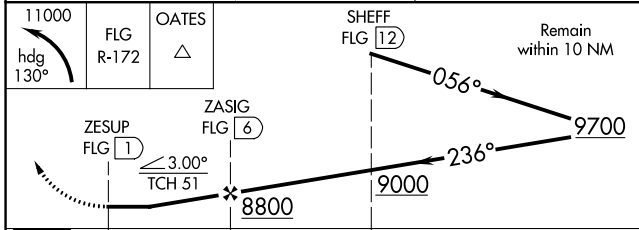
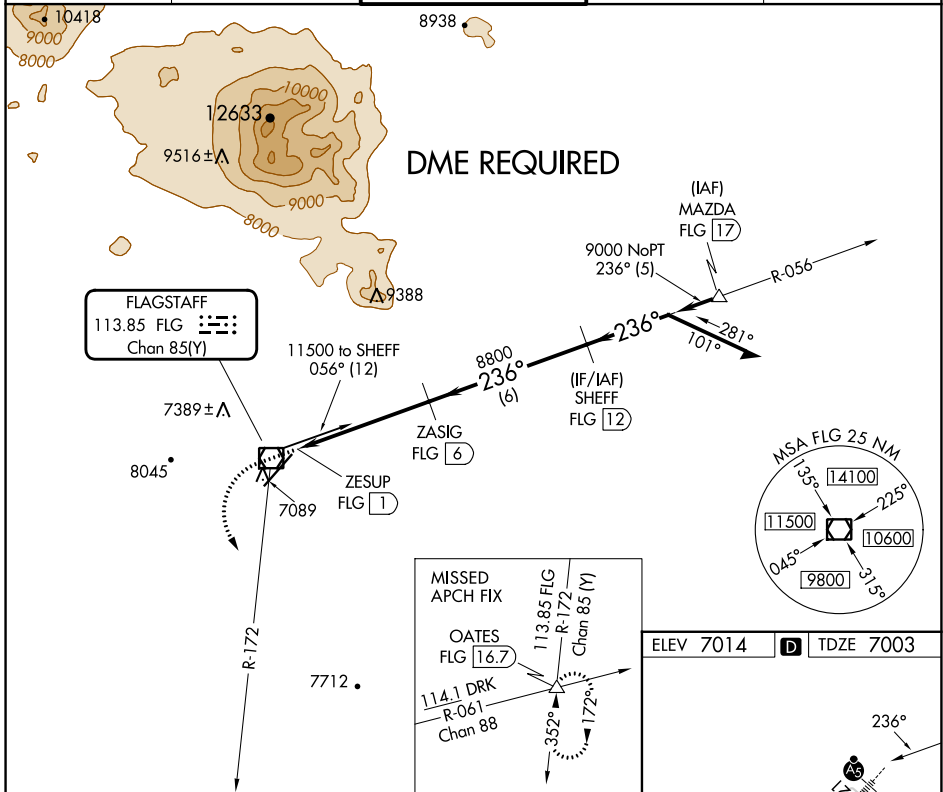
VOR/DME FLG <b>113.85</b> Chan 85(Y)	APP CRS <b>236°</b>	Rwy Idg <b>7000</b> TDZE <b>7003</b> Apt Elev <b>7014</b>
--	------------------------	---

# VOR RWY 21

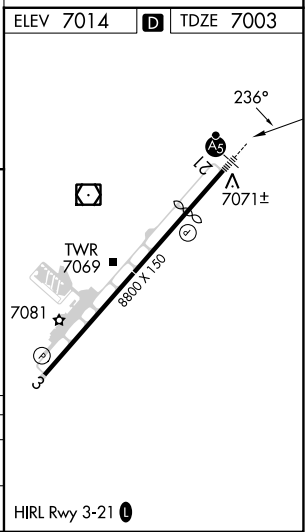
FLAGSTAFF PULLIAM (FLG)

	Rwy 21 helicopter visibility reduction below 1 SM NA. DME required. Inop table does not apply to S-21 Cats A/B. Night landing: Rwy 21, operational VGSI required, remain on or above VGSI glidepath until threshold.	MALSR 	MISSED APPROACH: Climbing left turn to 11000 on heading 130° and FLG R-172 to OATES INT/16.7 DME, continue climb-in-hold.
--	--	-----------	---

ATIS <b>125.8</b>	PHOENIX APP CON <b>126.375 236.775</b>	FLAGSTAFF TOWER ★ <b>134.55</b> (CTAF) <b>239.25</b>	GND CON <b>121.9</b>	UNICOM <b>122.95</b>
----------------------	---	---	-------------------------	-------------------------



CATEGORY	A	B	C	D
S-21	7520-1 517 (600-1)			
CIRCLING	7520-1 506 (600-1)	7560-1 546 (600-1)	8100-3 1086 (1100-3)	8560-3 1546 (1600-3)



SW-4, 28 NOV 2024 to 26 DEC 2024

SW-4, 28 NOV 2024 to 26 DEC 2024