

WAAS CH <b>56413</b> <b>W36A</b>	APP CRS <b>359°</b>	Rwy Idg <b>6509</b> TDZE <b>8</b> Apt Elev <b>9</b>
--	------------------------	---

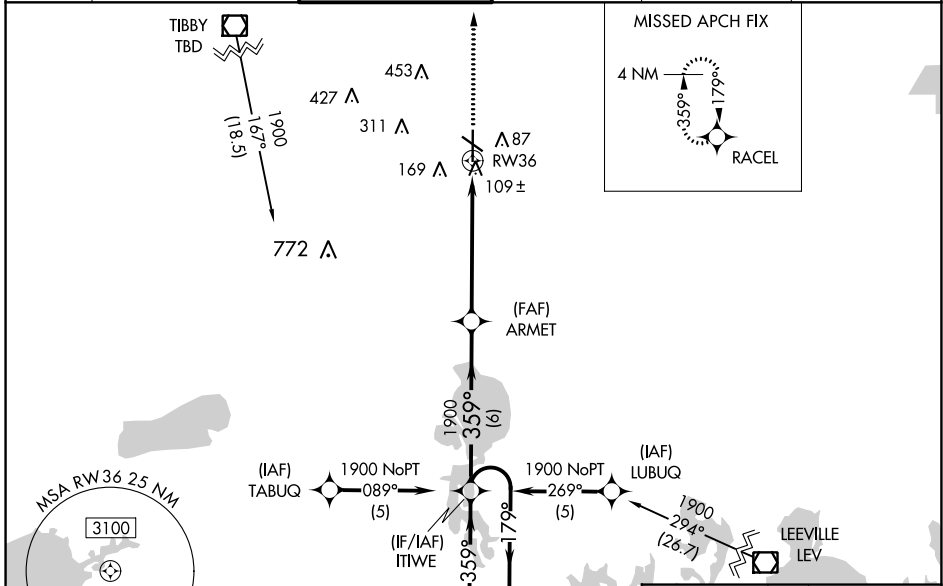
# RNAV (GPS) RWY 36

HOUMA-TERREBONNE (HUM)

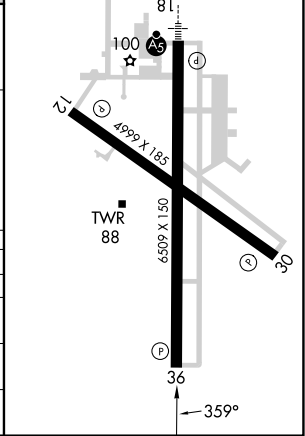
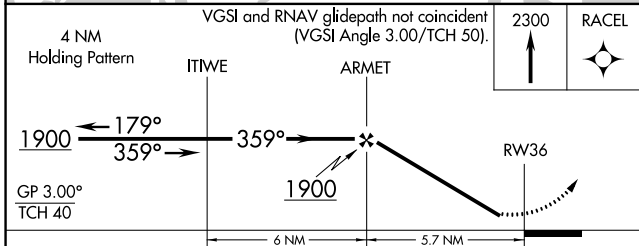
**⚠** Baro-VNAV NA when using Louis Armstrong New Orleans Intl altimeter setting.  
 For uncompensated Baro-VNAV systems, LNAV/VNAV NA below -15°C (5°F) or above 49°C (120°F). DME/DME RNP-0.3 NA. Visibility reduction by helicopters NA. When local altimeter setting not received, use Louis Armstrong New Orleans Intl altimeter setting: increase LPV DA to 408, LNAV/VNAV DA to 518, and all visibilities 1/8 SM; increase all MDAs 80 feet and visibility Cats C and D 1/4 SM.

MISSED APPROACH: Climb to 2300 direct RACEL and hold.

ATIS <b>120.25</b>	NEW ORLEANS APP CON <b>118.9 350.35</b>	HOUMA TOWER ★ <b>125.3 (CTAF) 346.3</b>	GND CON <b>123.875</b>	CLNC DEL <b>118.9</b> (When twr closed)	UNICOM <b>122.95</b>
-----------------------	--	--	---------------------------	---	-------------------------



ELEV <b>9</b>	TDZE <b>8</b>
REIL Rwy 12, 30 and 36 <b>1</b>	
MIRL Rwy 12-30 and 18-36 <b>1</b>	



CATEGORY	A	B	C	D
LPV DA		331-1	323 (400-1)	
LNAV/VNAV DA		441-1¼	433 (500-1¼)	
LNAV MDA	460-1	452 (500-1)	460-13/8	452 (500-13/8)
<b>C</b> CIRCLING	480-1	471 (500-1)	760-2¼ 751 (800-2¼)	760-2½ 751 (800-2½)

SC-4, 28 NOV 2024 to 26 DEC 2024

SC-4, 28 NOV 2024 to 26 DEC 2024