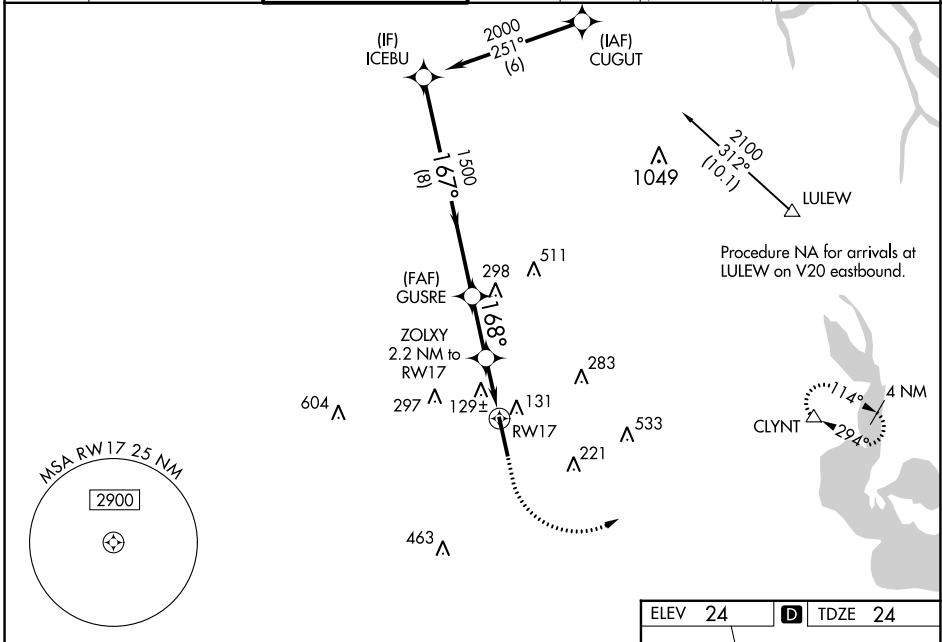


WAAS CH 82501 W17A	APP CRS 168°	Rwy Idg 8002 TDZE 24 Apt Elev 24
--	------------------------	---

RNAV (GPS) RWY 17

ACADIANA RGNL (A.R.A)

RNP APCH.					CLNC DEL 118.05 (when twr closed)		UNICOM 122.95		122.7	
Circling NA to Rwys 17W and 35W. Inop table does not apply to LPV. For inop ALS, increase LNAV/VNAV all Cats visibility to 1 1/4 SM and LNAV Cats C/D visibility to 1 SM. For uncompensated Baro-VNAV systems, LNAV/VNAV NA below -3°C or above 54°C.					ODALS		MISSED APPROACH: Climb to 480 then climbing left turn to 2000 direct CLYNT and hold.			
ASOS 133.325	LAFAYETTE APP CON* 121.1 268.7	ACADIANA TOWER* 125.0 (CTAF) 239.3	GND CON 121.7	CLNC DEL 121.7						



SC-4, 28 NOV 2024 to 26 DEC 2024

SC-4, 28 NOV 2024 to 26 DEC 2024

VGSI and RNAV glidepath not coincident (VGSI Angle 3.00/TCH 51).

ICEBU	GUSRE	ZOLXY	RWY 17	CLYNT
2000	1500	760	480	2000
GP 3.00° TCH 51		*LNAV only.		
8 NM	2.3 NM	1.2 NM	1 NM	
CATEGORY	A	B	C	D
LPV DA		274-3/4	250 (300-3/4)	
LNAV/VNAV DA		420-1 1/8	396 (400-1 1/8)	
LNAV MDA	380-3/4	356 (400-3/4)	380-7/8	356 (400-7/8)
CIRCLING	440-1 416 (500-1)	480-1 456 (500-1)	600-1 1/2 576 (600-1 1/2)	680-2 656 (700-2)

