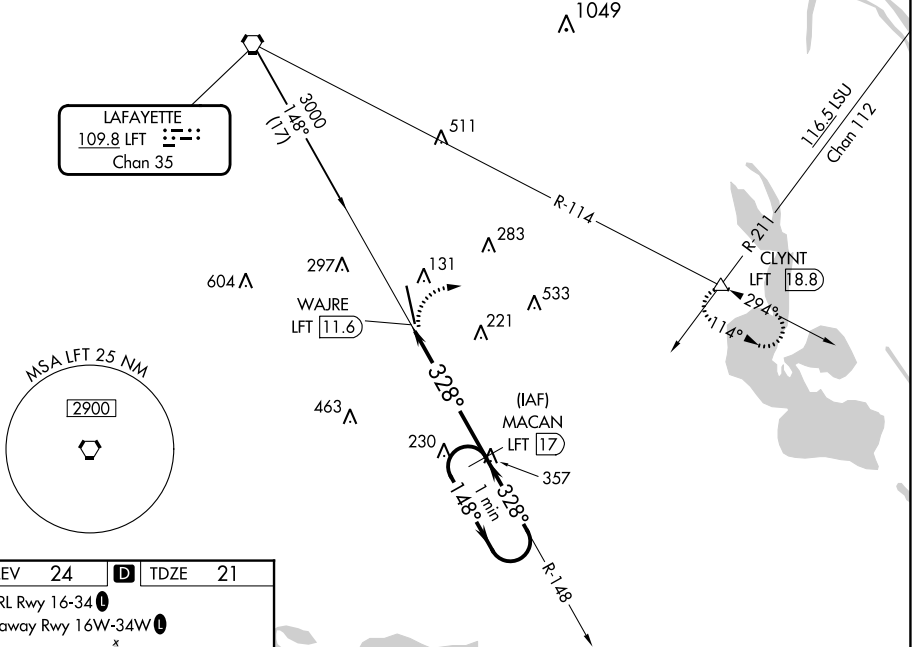


VORTAC LFT <b>109.8</b>	APP CRS <b>328°</b>	Rwy Idg TDZE Apt Elev	<b>8002</b> <b>21</b> <b>24</b>
Chan <b>35</b>			

**VOR RWY 35**  
ACADIANA RGNL (A.R.A.)

<p>Circling NA to Rwy's 17W and 35W. DME required. Inop table does not apply.</p>		<p>MALS</p>	<p>MISSED APPROACH: Climbing right turn to 2000 on heading 080° and LFT R-114 to CLYNT INT/LFT 18.8 DME and hold.</p>				
ASOS <b>133.325</b>	LAFAYETTE APP CON * <b>121.1 268.7</b>	ACADIANA TOWER * <b>125.0 (CTAF) 239.3</b>	GND CON <b>121.7</b>	CLNC DEL <b>121.7</b>	CLNC DEL <b>118.05</b> (when twr closed)	UNICOM <b>122.95</b>	<b>122.7</b>

**DME REQUIRED**



SC-4, 28 NOV 2024 to 26 DEC 2024

SC-4, 28 NOV 2024 to 26 DEC 2024

ELEV <b>24</b>	<b>D</b>	TDZE <b>21</b>
HIRL Rwy 16-34		
Seaway Rwy 16W-34W		

<p>2000 hdg 080°</p>	<p>LFT R-114</p>	<p>CLYNT </p>	<p>MACAN LFT 17</p>	<p>One Minute Holding Pattern</p>	
<p>WJARE LFT 11.6</p>		<p>LFT 13</p>	<p>3.00° TCH 52</p>	<p>1800</p>	
<p>1.5</p>		<p>4 NM</p>		<p>148° →</p> <p>← 328°</p>	
CATEGORY	A	B	C	D	E
S-35	540-1/2	519 (600-1/2)	540-13/8	519 (600-13/8)	
<b>C</b> CIRCLING	540-1	516 (600-1)	600-1/2 576 (600-1/2)	680-2 656 (700-2)	900-3 876 (900-3)