

WAAS CH 45521 W05A	APP CRS 048°	Rwy Idg TDZE Apt Elev	5000 8 9
--	------------------------	-----------------------------	-------------------------------------

RNAV (GPS) RWY 5

GROTON-NEW LONDON (GON)

RNP APCH - GPS.

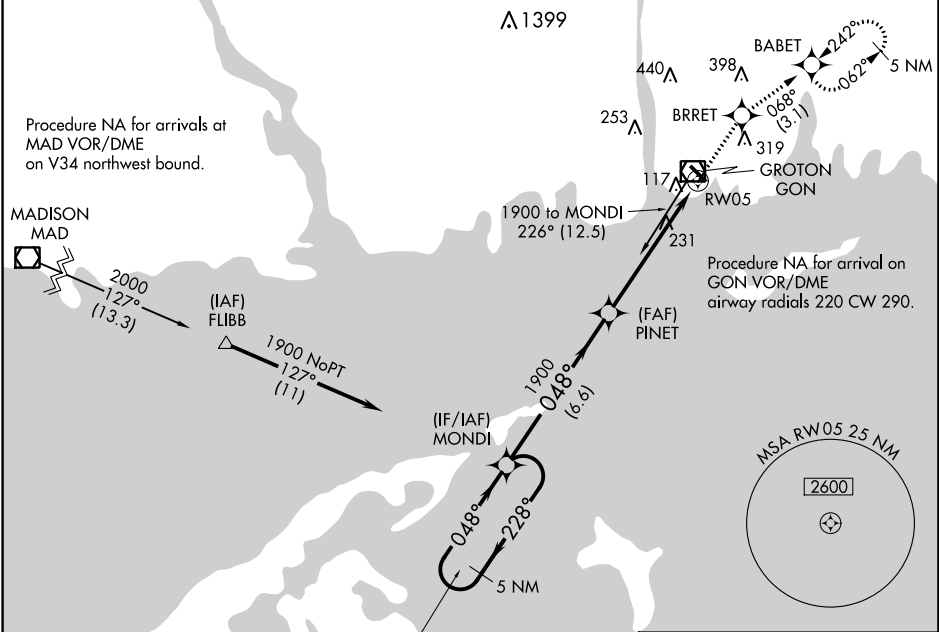
⚠ Circling Rwy 15 NA at night. For uncompensated Baro-VNAV systems, procedure NA below -15°C or above 54°C. For inop ALS, increase LPV all Cats visibility to RVR 4500 and LNAV Cats visibility C/D to 1%.
⚠ Procedure NA for arrivals at MAD VOR/DME on V34 northwest bound.

MALSR



MISSED APPROACH: Climb to 2100 direct BRRET and on track 068° to BABET and hold, continue climb-in-hold to 2100.

ATIS 127.0	PROVIDENCE APP CON ★ 125.75 319.2	GROTON TOWER ★ 125.6 (CTAF) 0 236.775	GND CON 121.65 236.775	CLNC DEL 119.85 (when twr closed)	CLNC DEL 121.65
----------------------	---	---	----------------------------------	--	---------------------------

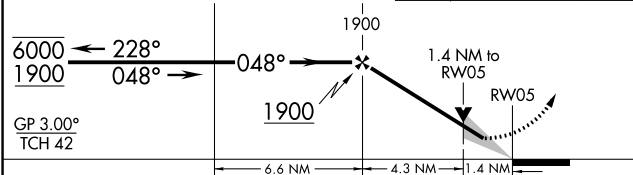


NE-1, 28 NOV 2024 to 26 DEC 2024

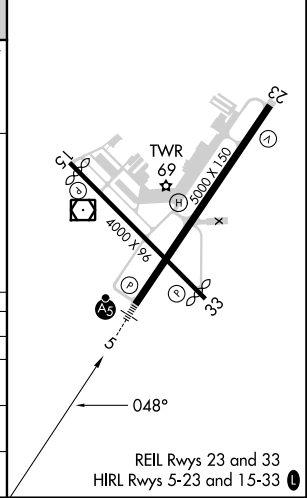
NE-1, 28 NOV 2024 to 26 DEC 2024

ELEV 9	D TDZE 8
--------	-----------------

5 NM Holding Pattern	2100	BRRET	BABET
	↑	✧	✧
		Tr 068°	



CATEGORY	A	B	C	D
LPV DA		292/24	284 (300-½)	
LNAV/VNAV DA		533/55	525 (600-1)	
LNAV MDA	500/24	492 (500-½)	500/50	492 (500-1)
CIRCLING	580-1 571 (600-1)	620-1 611 (700-1)	700-2 691 (700-2)	840-2¾ 831 (900-2¾)



REIL Rwy 23 and 33
HIRL Rwy 5-23 and 15-33