

# RNAV (GPS) RWY 27

APCH CRS	Rwy Idg	4121
273°	TDZE	242
	Arpt Elev	243

[USA]

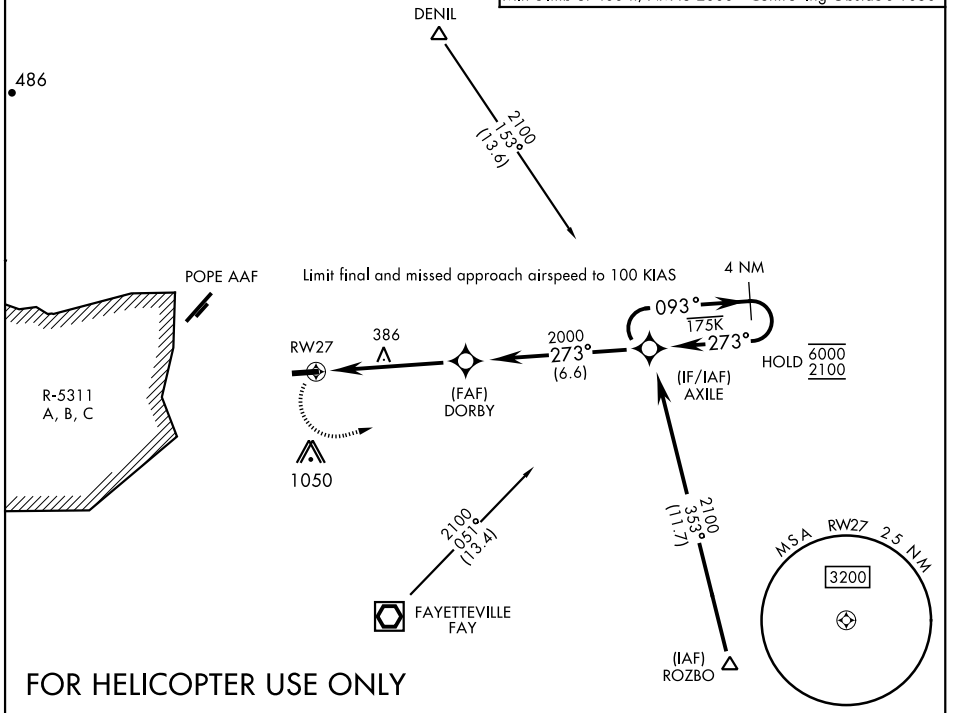
SIMMONS AAF (KFBG)

RNP APCH - GPS	MISSED APPROACH: Climbing left turn to 2100 direct AXILE and hold.
▼ When local altimeter setting not received, use Pope AAF altimeter setting.	

ATIS <b>139.25</b>	FAYETTEVILLE APP CON <b>133.0 290.25</b>	TOWER ★ <b>125.9 240.625</b>	GND CON <b>121.9 229.4</b>
-----------------------	---	---------------------------------	-------------------------------

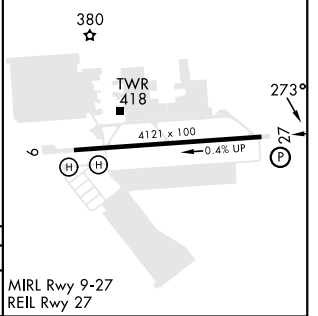
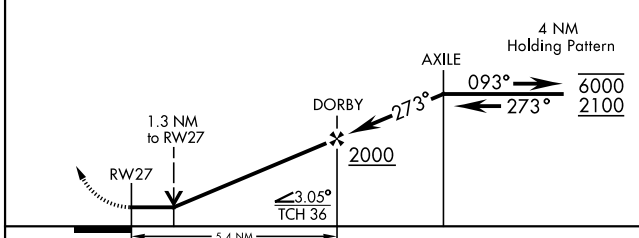
Rwy 27 helicopter visibility reduction below 3/4 mile not authorized.

Knots	60	120	180	240	300	360
V/V(fpm)	400	800	1200	1600	2000	2400
Min climb of 400 ft/NM to 2000 - Controlling Obstacle 1050'						



## FOR HELICOPTER USE ONLY

2100	AXILE	ELEV	243	TDZE	242
------	-------	------	-----	------	-----



CATEGORY	A	B	C	D	MIRL Rwy 9-27 REIL Rwy 27
LNAV MDA	680-1 452 (500-1)	NA			

# RNAV (GPS) RWY 27

SE-2, 28 NOV 2024 to 26 DEC 2024

SE-2, 28 NOV 2024 to 26 DEC 2024