

WAAS CH 42519 W10B	APP CRS 098°	Rwy Idg TDZE Apt Elev	5001 906 906
--	------------------------	-----------------------------	---

RNAV (GPS) RWY 10R

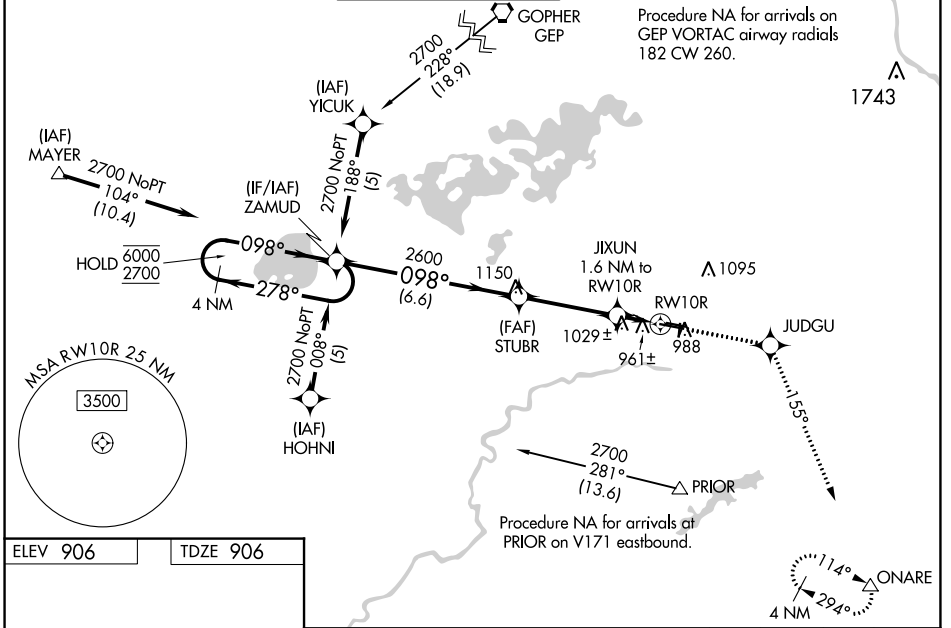
FLYING CLOUD (FCM)

RNP APCH.

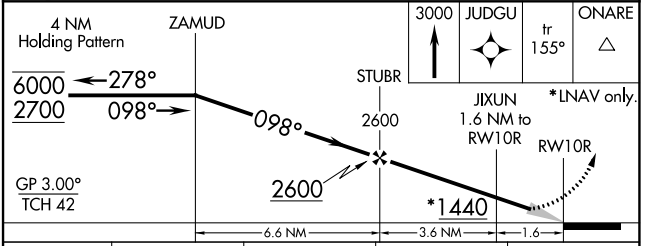
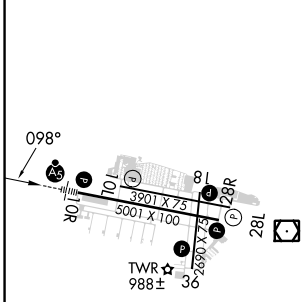
▼ Baro-VNAV NA when using Minneapolis-St Paul Intl/Wold Chamberlain altimeter setting.
▲ For uncompensated Baro-VNAV systems, LNAV/VNAV NA below -16°C (4°F) or above 47°C (116°F). When local altimeter setting not received, use Minneapolis-St Paul Intl/Wold Chamberlain altimeter setting and increase all DA 34 feet and all MDA 40 feet and increase LNAV Cat C visibility ¼ mile. For inoperative MALSR increase LNAV Cat D visibility to 1¼. When Circling to Rwy 18, 36 at night, operational VGSI required, remain on or above VGSI glidepath until threshold.

MALSR 	MISSED APPROACH: Climb to 3000 direct JUDGU and on track 155° to ONARE and hold.
-----------	---

ATIS 124.9	MINNEAPOLIS APP CON 134.7 284.7	FLYING CLOUD TOWER * 119.15 (CTAF) 0	GND CON 121.7	CLNC DEL 121.7 (When twr closed)	UNICOM 122.95
----------------------	---	--	-------------------------	---	-------------------------



ELEV 906	TDZE 906
----------	----------



- HIRL Rwy 10R-28L
- REIL Rws 10L and 28R
- REIL Rws 18, 28L, and 36
- MIRL Rwy 10L-28R
- MIRL Rwy 18-36

CATEGORY	A				B		C		D	
	A		B		C		D		E	
LPV DA	1106-½				200 (200-½)					
LNAV/VNAV DA	1237-¾				331 (400-¾)					
LNAV MDA	1280-½				374 (400-½)		1280-1		374 (400-1)	
C CIRCLING	1320-1		1440-1		1440-½		1540-2			
	414 (500-1)		534 (600-1)		534 (600-½)		634 (700-2)			

NC-1, 28 NOV 2024 to 26 DEC 2024

NC-1, 28 NOV 2024 to 26 DEC 2024