

VOR/DME FCM 117.7 Chan 124	APP CRS 100°	Rwy Idg TDZE Apt Elev 5001 906 906
--	------------------------	--

VOR RWY 10R

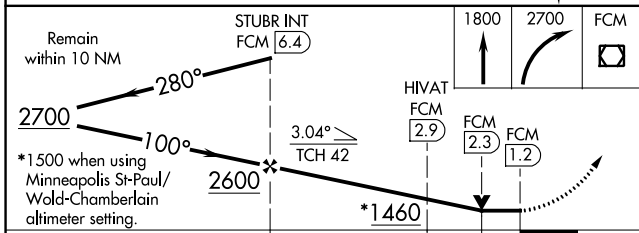
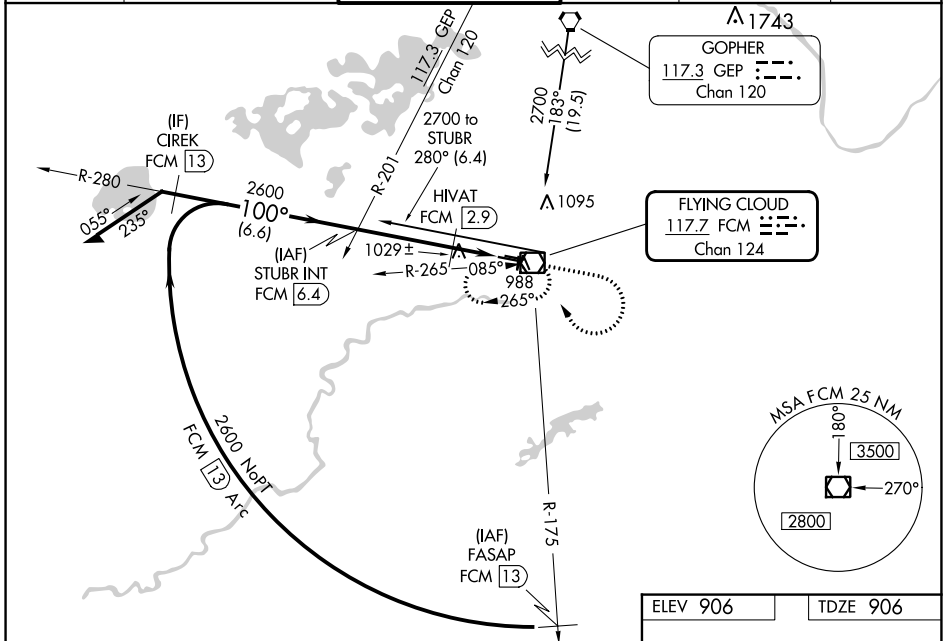
FLYING CLOUD (FCM)

⚠ When local altimeter setting not received, use Minneapolis St-Paul/Wald-Chamberlain altimeter setting and increase all MDA 40 feet, HIVAT fix minimums: Increase S-10R Cat C visibility ¼ mile. For inoperative MALSRL, HIVAT fix minimums: Increase S-10R Cat D visibility to 1 ¼ mile. VDP NA when using Minneapolis St-Paul/Wald-Chamberlain altimeter setting. When Circling to Rwy 18, 36 at night, operational VGSI required, remain on or above VGSI glidepath until threshold.

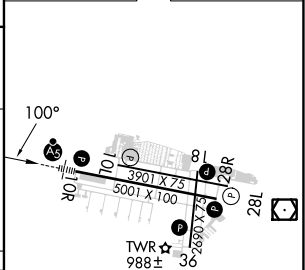
MALSRL

MISSED APPROACH: Climb to 1800 then climbing right turn to 2700 direct FCM VOR/DME and hold, continue climb-in-hold to 2700.

ATIS 124.9	MINNEAPOLIS APP CON 134.7 284.7	FLYING CLOUD TOWER * 119.15 (CTAF)	GND CON 121.7	CLNC DEL 121.7 (When twr closed)	UNICOM 122.95
----------------------	---	--	-------------------------	---	-------------------------



ELEV 906	TDZE 906
----------	----------



CATEGORY	A	B	C	D
S-10R	1460-½	554 (600-½)	1460-1	1460-1¼
C CIRCLING	1460-1	554 (600-1)	1460-1½	1540-2
HIVAT FIX MINIMUMS (DME REQUIRED)				
S-10R	1280-½	374 (400-½)	1280-1	374 (400-1)
C CIRCLING	1320-1	1440-1	1440-1½	1540-2
	414 (500-1)	534 (600-1)	534 (600-1½)	634 (700-2)

HIRL Rwy 10R-28L **Ⓡ**
 REIL Rwys 10L and 28R
 REIL Rwys 18, 28L, and 36 **Ⓡ**
 MIRL Rwy 10L-28R
 MIRL Rwy 18-36 **Ⓡ**

FAF to MAP 5.2 NM

Knots	60	90	120	150	180
Min:Sec	5:12	3:28	2:36	2:05	1:44

NC-1, 28 NOV 2024 to 26 DEC 2024

NC-1, 28 NOV 2024 to 26 DEC 2024