

WAAS CH 69204 W33A	APP CRS 336°	Rwy Idg 5950 TDZE 4316 Apt Elev 4317
--	------------------------	---

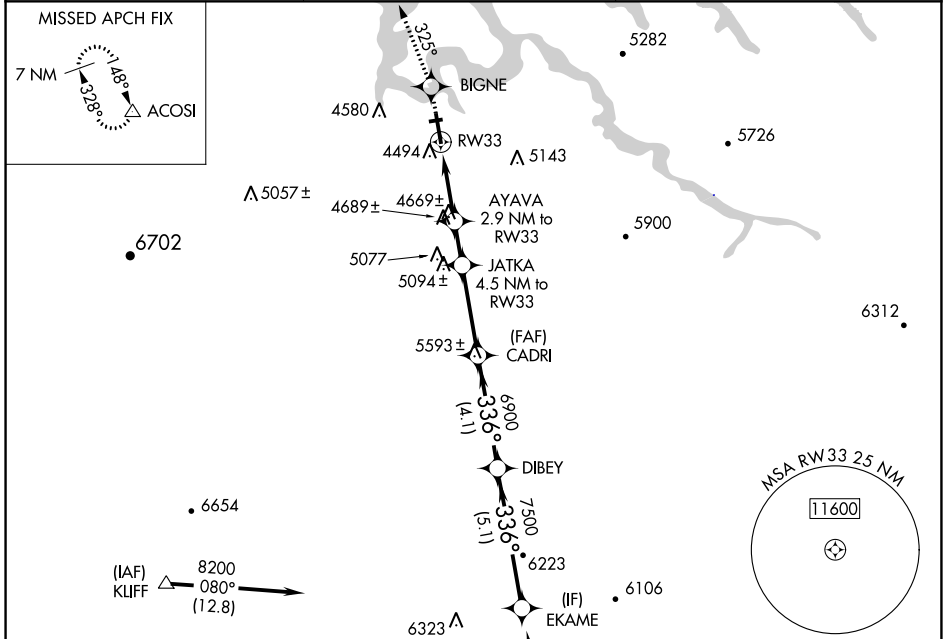
RNAV (GPS) RWY 33

PAGE MUNI (PGA)

▼ For uncompensated Baro-VNAV systems, LNAV/VNAV NA below -23°C (-9°F) or above 41°C (105°F). DME/DME RNP-0.3 NA. Circling NA to Rwy 7-25.

MISSED APPROACH: Climb to 8500 direct BIGNE and via 325° track to ACOSI and hold, continue climb-in-hold to 8500.

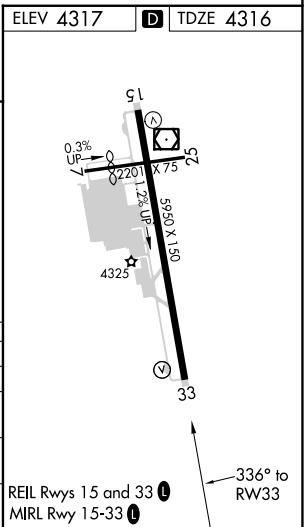
ASOS 120.625	DENVER CENTER 127.55 256.875	UNICOM 122.8 (CTAF) D
------------------------	--	--



ELEV 4317 **D** TDZE 4316

Procedure NA for arrivals at CELAY via V208 southbound.

8500	BIGNE	ACOSI	VGSI and RNAV glidepath not coincident (VGSI Angle 3.00/TCH 30).			EKAME
↑	325° tr	△	JATKA	CADRI	DIBEY	8200
*LNAV only.		AYAVA			Procedure Turn NA	
*1.8 NM to RWY 33		2.9 NM to RWY 33	4.5 NM to RWY 33		GP 3.00° TCH 50	
5280	5800	6900	7500	8200		
1.8 NM	1.1 NM	1.6 NM	3.3 NM	4.1 NM	5.1 NM	
CATEGORY	A	B	C	D		
LPV DA	4566-1			250 (300-1)		
LNAV/VNAV DA	4744-1½			428 (500-1½)		
LNAV MDA	4920-1	604 (700-1)	4920-1¾	604 (700-1¾)	4920-2	604 (700-2)
CIRCLING	4920-1	603 (700-1)	5080-2¼	763 (800-2¼)	5360-3	1043 (1100-3)



SW-4, 28 NOV 2024 to 26 DEC 2024

SW-4, 28 NOV 2024 to 26 DEC 2024