

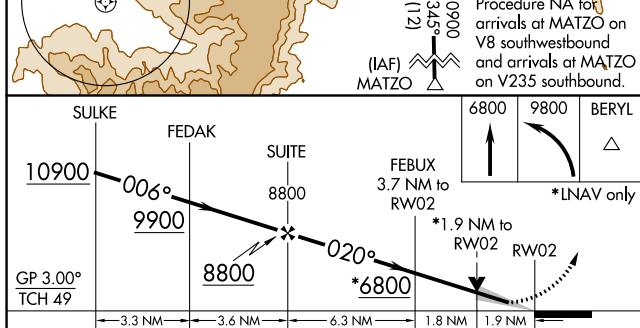
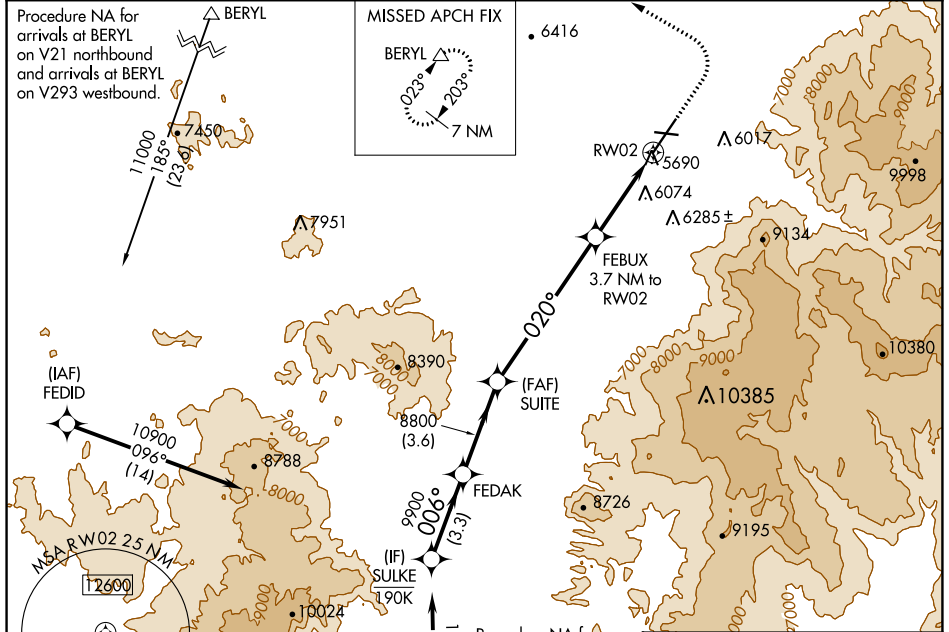
WAAS CH 49143 W02A	APP CRS 020°	Rwy Idg TDZE Apt Elev	8653 5592 5622
--	------------------------	-----------------------------	---

RNAV (GPS) RWY 2

CEDAR CITY RGNL (CDC)

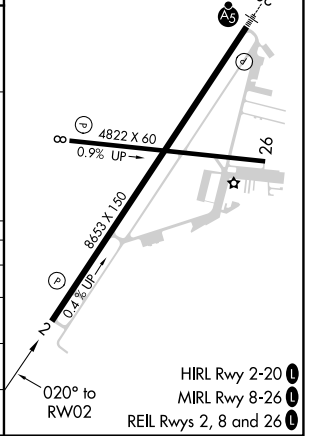
RNP APCH.	MISSED APPROACH: Climb to 6800 then climbing left turn to 9800 direct BERYL and hold.
	Circling NA east of Rwy 2-20. Baro-VNAV NA.

ASOS 119.025	SALT LAKE CITY CENTER 125.575 379.275	UNICOM 123.0 (CTAF) 0
------------------------	---	---------------------------------



ELEV 5622	TDZE 5592
-----------	-----------

CATEGORY	A	B	C	D
LPV DA		5867-7/8	275 (300-7/8)	
LNAV/VNAV DA		6394-2 1/2	802 (800-2 1/2)	
LNAV MDA	6240-1 648 (700-1)		6240-1 7/8 648 (700-1 7/8)	
CIRCLING	6240-1 618 (700-1)		6240-1 7/8 618 (700-1 7/8)	6240-2 618 (700-2)



SW-4, 28 NOV 2024 to 26 DEC 2024

SW-4, 28 NOV 2024 to 26 DEC 2024