

VOR/DME EHK <b>117.3</b> Chan 120	APP CRS <b>177°</b>	Rwy Idg TDZE Apt Elev <b>8653</b> <b>5605</b> <b>5622</b>
-----------------------------------------	------------------------	--------------------------------------------------------------------------

# VOR RWY 20

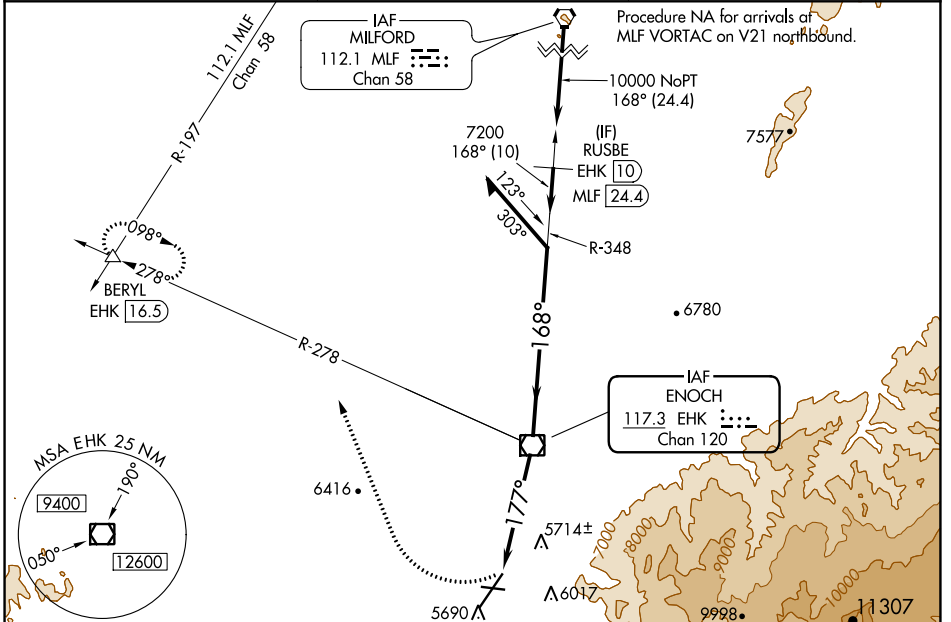
CEDAR CITY RGNL (CDC)

**⚠** Circling NA southeast of Rwy 2-20. For inop ALS S-20\* increase Cat C/D visibility to 1½ SM.

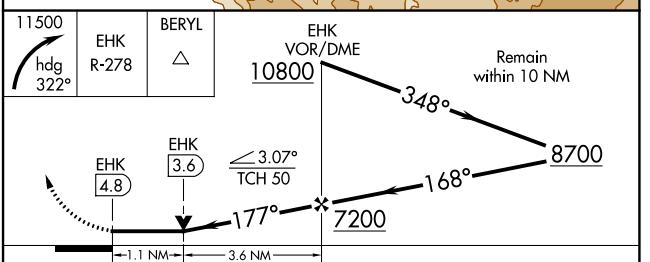
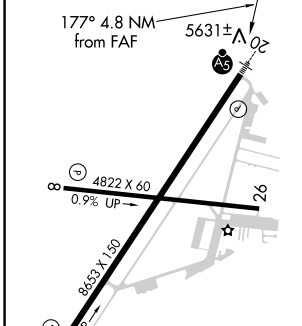


**MISSED APPROACH:** Climbing right turn to 11 500 on heading 322° and on EHK VOR/DME R-278 to BERYL INT/EHK 16.5 DME and hold, continue climb-in-hold to 11 500.  
\*Missed approach requires minimum climb of 247 feet per NM to 7500.

ASOS <b>119.025</b>	SALT LAKE CITY CENTER <b>125.575 379.275</b>	UNICOM <b>123.0 (CTAF)</b>
------------------------	-------------------------------------------------	-------------------------------



ELEV 5622	TDZE 5605
-----------	-----------



CATEGORY	A	B	C	D
S-20*	6020-½ 415 (400-½)		6020-¾ 415 (400-¾)	
S-20	6300-½ 695 (700-½)		6300-1½ 695 (700-1½)	
<b>☑</b> CIRCLING	6300-1 678 (700-1)		6300-2 678 (700-2)	6300-2½ 678 (700-2½)

FAF to MAP 4.8 NM

Knots	60	90	120	150	180
Min:Sec	4:48	3:12	2:24	1:55	1:36

SW-4, 28 NOV 2024 to 26 DEC 2024

SW-4, 28 NOV 2024 to 26 DEC 2024