

NDB GUY 275	APP CRS 177°	Rwy Idg TDZE Apt Elev	5904 3125 3125
-----------------------	------------------------	-----------------------------	---

NDB RWY 18

GUYMON MUNI (GUY)

⚠ Circling NA to Rwys 6 and 24. Circling NA east of Rwy 18-36. When local altimeter setting not received, use Liberal altimeter setting and increase all MDAs 120 feet and visibility Cats A and C ½ SM. For inop ALS, increase S-18 Cat C visibility to 2½ SM. For inop ALS when using Liberal altimeter setting, inop table does not apply to S-18 Cat C.

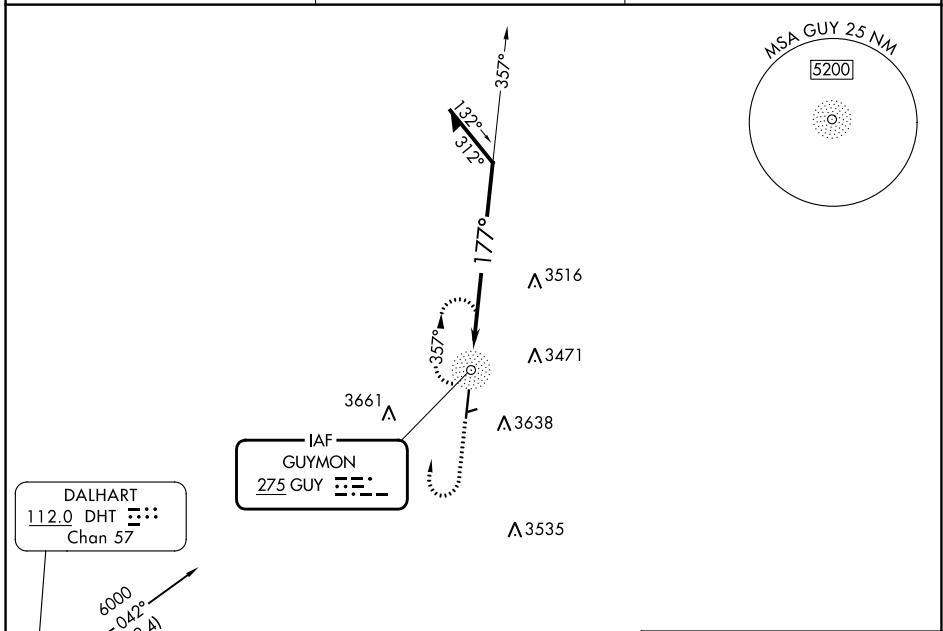


MISSED APPROACH:
Climb to 5000 then right turn direct GUY NDB and hold.

ASOS
119.925

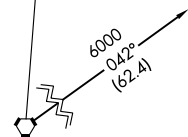
KANSAS CITY CENTER
134.0 257.865

UNICOM
122.7 (CTAF)



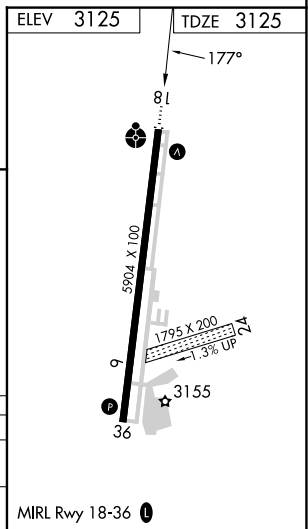
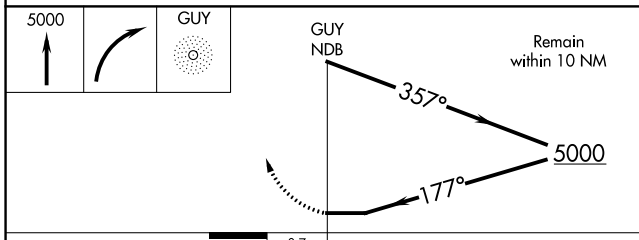
DALHART
112.0 DHT
Chan 57

IAF
GUYMON
275 GUY



Procedure NA for arrivals on DHT VORTAC
airway radial 071.

3870±



CATEGORY	A	B	C	D
S-18	3900-¾ 775 (800-¾)	3900-1 775 (800-1)	3900-2 775 (800-2)	NA
CIRCLING	3900-1 775 (800-1)	3900-1¼ 775 (800-1¼)	3980-2½ 855 (900-2½)	NA

MIRL Rwy 18-36