

ILS or LOC RWY 30

LOC I-NSI 109.7	APCH CRS 301°	Rwy Idg TDZE Arprt Elev 10,002 506 506
---------------------------	-------------------------	--

AL-5162 [USN]

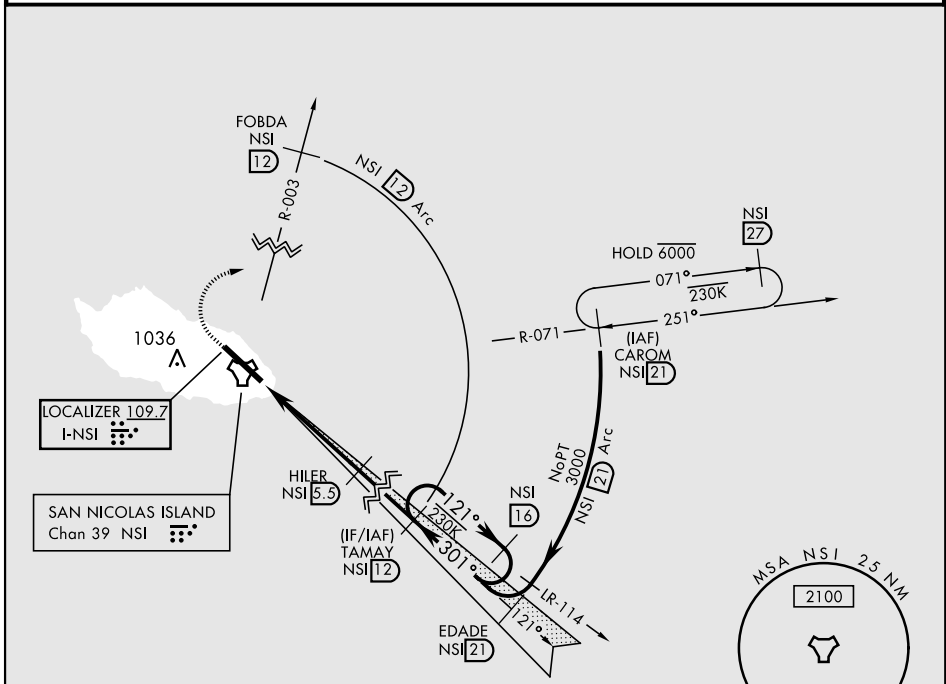
SAN NICOLAS ISLAND NOLF (KNSI)

DME required for ILS procedure. RADAR or TACAN required.

▼ *Circling not authorized W of Rwy 12-30.

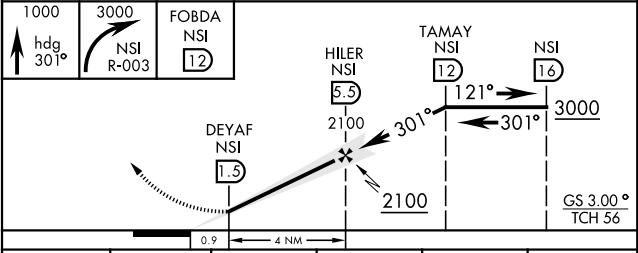
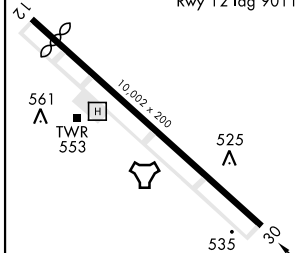
MISSED APPROACH: Climb to 1000 via heading 301°, then climbing right turn to 3000 to intercept NSI R-003 to FOBDA, then arc E of NSI 12 mile arc to TAMAY and hold.

TOWER ★
126.85 379.3



EMERG SAFE ALT 100 NM 10,900

ELEV 506	TDZE 506
----------	----------



CATEGORY	A	B	C	D	E
S-ILS 30		706-¾	200	(200-¾)	
S-LOC 30		780-1	274	(300-1)	
CIRCLING*	860-1 354 (400-1)	960-1 454 (500-1)	960-1½ 454 (500-1½)	1060-2 554 (600-2)	

SAN NICOLAS ISLAND, CALIFORNIA
Amdt 6 18MAY23

33° 14'N-119° 27'W

SAN NICOLAS ISLAND NOLF (KNSI)

ILS or LOC RWY 30

SW-3, 28 NOV 2024 to 26 DEC 2024