

LOC/DME I-BJI 109.35 Chan 30 (Y)	APP CRS 253°	Rwy Idg TDZE Apt Elev	5700 1389 1391
---	------------------------	-----------------------------	---

ILS or LOC RWY 25

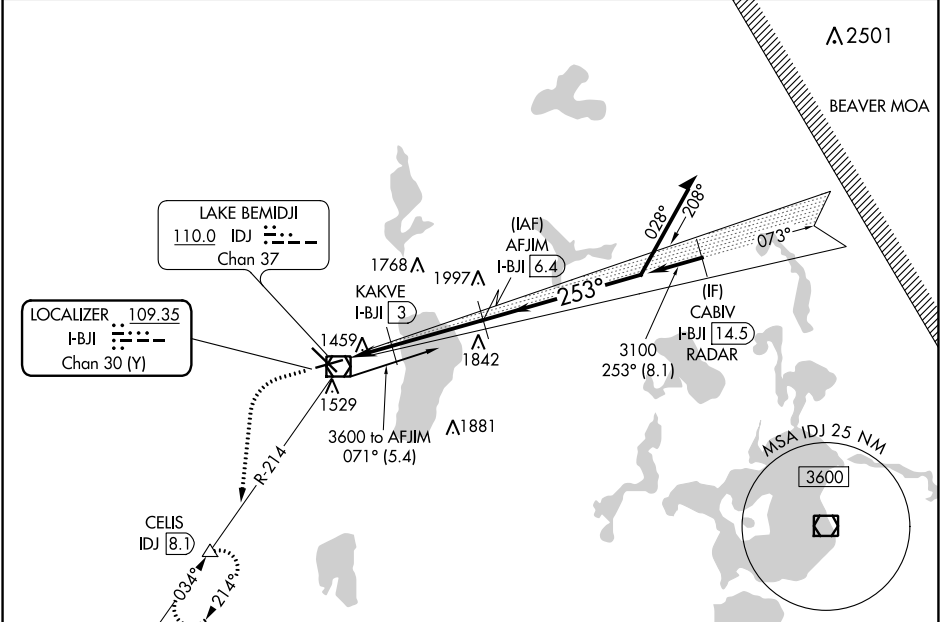
BEMIDJI RGNL (BJI)

DME required. RADAR required for procedure entry.

▲ NA

MISSED APPROACH: Climb to 2300 then climbing left turn to 3400 on heading 185° and IDJ VOR/DME R-214 to CELIS/IDJ VOR/DME 8.1 DME and hold, continue climb-in-hold to 3400.

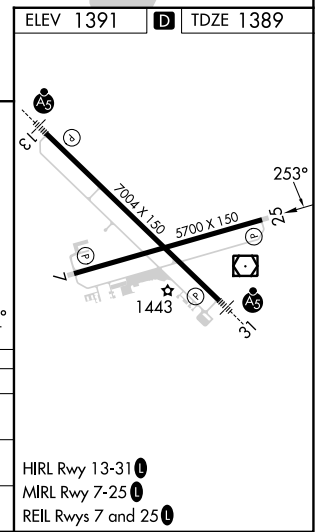
AWOS-3 119.275	MINNEAPOLIS CENTER 134.75 251.1	UNICOM 122.8 (CTAF)
--------------------------	---	-------------------------------



NC-1, 28 NOV 2024 to 26 DEC 2024

NC-1, 28 NOV 2024 to 26 DEC 2024

ELEV 1391	D TDZE 1389								
<table border="1"> <tr> <td>2300</td> <td>3400</td> <td>IDJ</td> <td>CELIS</td> </tr> <tr> <td>↑</td> <td>hdg 185°</td> <td>R-214</td> <td>△</td> </tr> </table>	2300	3400	IDJ	CELIS	↑	hdg 185°	R-214	△	AFJIM I-BJI 6.4 Use I-BJI DME when on the localizer course. Remain within 10 NM
2300	3400	IDJ	CELIS						
↑	hdg 185°	R-214	△						
*LOC only	KAKVE I-BJI 3 I-BJI 1.1 *I-BJI 2 2020* 0.9 NM 0.9 NM 3.4 NM								
CATEGORY	A B C D								
S-ILS 25	1589-¾ 200 (200-¾)								
S-LOC 25	1720-1 331 (400-1)								
C CIRCLING	1840-1 449 (500-1) 1860-1 469 (500-1) 1860-1½ 469 (500-1½) 1960-2 569 (600-2)								



HIRL Rwy 13-31
MRL Rwy 7-25
REIL Rws 7 and 25