

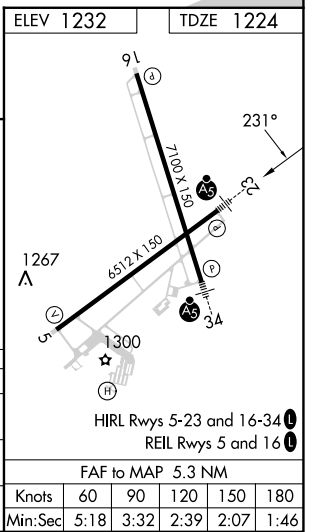
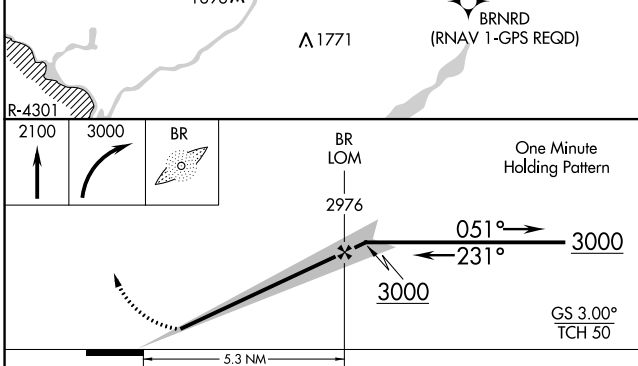
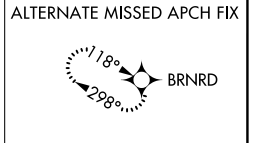
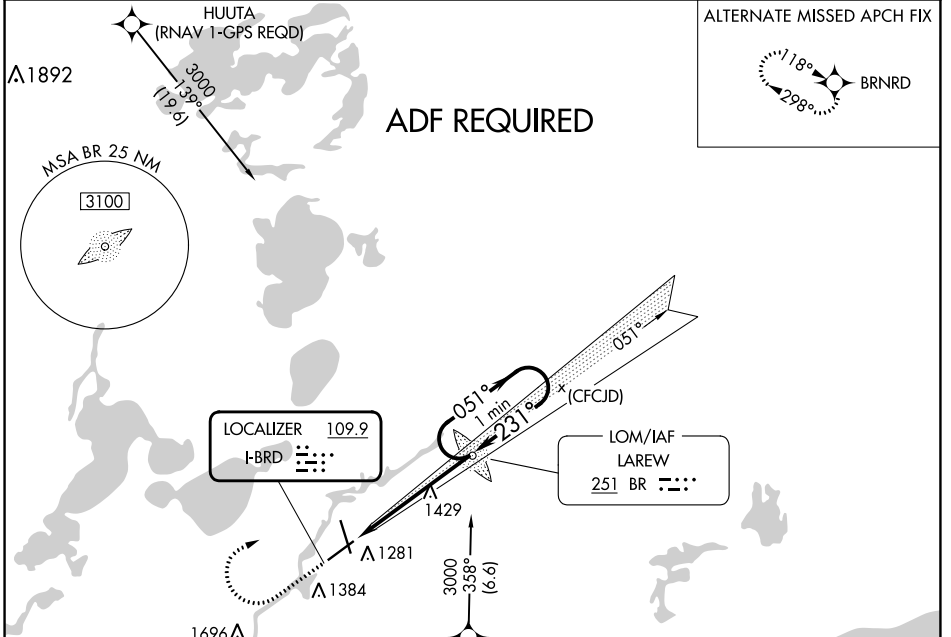
LOC I-BRD <b>109.9</b>	APP CRS <b>231°</b>	Rwy ldg 6512
		TDZE 1224
		Apt Elev 1232

# ILS or LOC RWY 23

BRainerd LAKES RGNL (BRD)

<p><b>ADF REQUIRED.</b> When local altimeter setting not received, use Aitkin altimeter setting and increase all DAs 52 feet and all MDAs 60 feet. Increase S-LOC Cat C visibility to 1 SM and Circling Cat D visibility to 2 1/4 SM.</p>	<p>MALSR</p>	<p>MISSED APPROACH: Climb to 2100 then climbing right turn to 3000 direct LAREW LOM and hold.</p>
---	--------------	---

ASOS <b>126.775</b>	MINNEAPOLIS CENTER <b>118.05 239.0</b>	UNICOM <b>122.7 (CTAF)</b>
------------------------	---	-------------------------------



CATEGORY	A	B	C	D
S-ILS 23	1424-1/2 200 (200-1/2)			
S-LOC 23	1680-1/2	456 (500-1/2)	1680-7/8 456 (500-7/8)	1680-1 456 (500-1)
<b>C</b> CIRCLING	1760-1	528 (600-1)	1760-1 1/2 528 (600-1 1/2)	1860-2 628 (700-2)

NC-1, 28 NOV 2024 to 26 DEC 2024

NC-1, 28 NOV 2024 to 26 DEC 2024