

WAAS CH 63199 W17A	APP CRS 174°	Rwy Idg TDZE 843 Apt Elev 845	7351 843 845
--	------------------------	---	---

RNAV (GPS) RWY 17R

GRAND FORKS INTL (GFK)

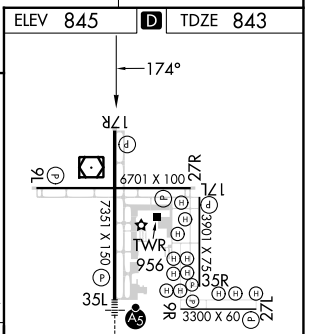
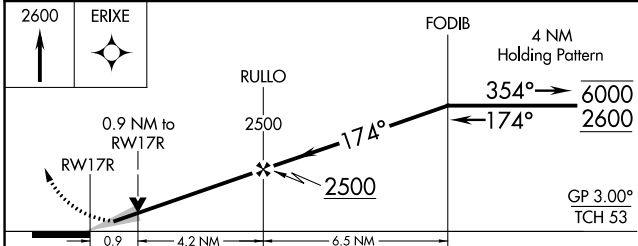
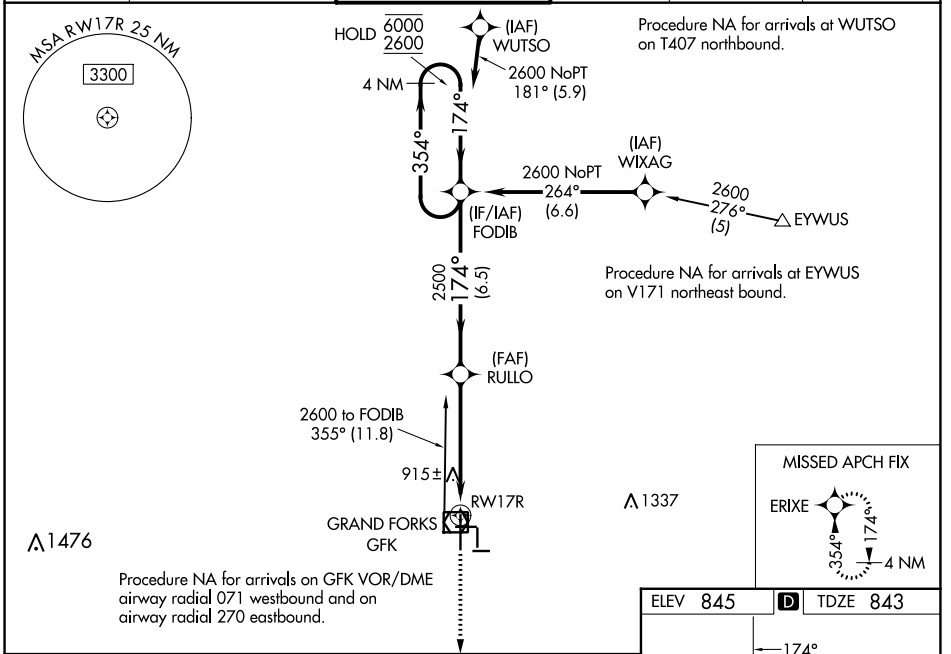
RNP APCH - GPS.

Baro-VNAV NA when using Crookston altimeter setting. For uncompensated Baro-VNAV systems, LNAV/VNAV NA below -20°C or above 54°C. VDP NA with Crookston altimeter setting.

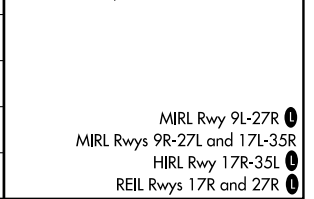
When local altimeter setting not received, use Crookston altimeter setting and increase all DA 62 feet and all MDA 80 feet and increase LPV and LNAV/VNAV all Cats visibility 1/8 SM, LNAV Cats C/D visibility 1/8 SM, and Circling Cat C visibility 1/4 SM.

MISSED APPROACH: Climb to 2600 direct ERIXE and hold.

ATIS 119.4	GRAND FORKS APP CON* 118.1 318.1	GRAND FORKS TOWER* 118.4 (CTAF) 0 350.35	GND CON 124.575	CLNC DEL 135.725	UNICOM 122.95
----------------------	--	--	---------------------------	----------------------------	-------------------------



CATEGORY	A	B	C	D
LPV DA		1043-3/4	200 (200-3/4)	
LNAV/VNAV DA		1093-3/4	250 (300-3/4)	
LNAV MDA		1180-1	337 (400-1)	
CIRCLING	1260-1 415 (500-1)	1300-1 455 (500-1)	1400-1 1/2 555 (600-1 1/2)	1400-2 555 (600-2)



NC-1, 28 NOV 2024 to 26 DEC 2024

NC-1, 28 NOV 2024 to 26 DEC 2024