

BORRN SIX DEPARTURE (RNAV)

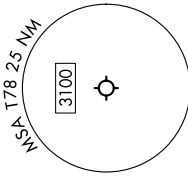
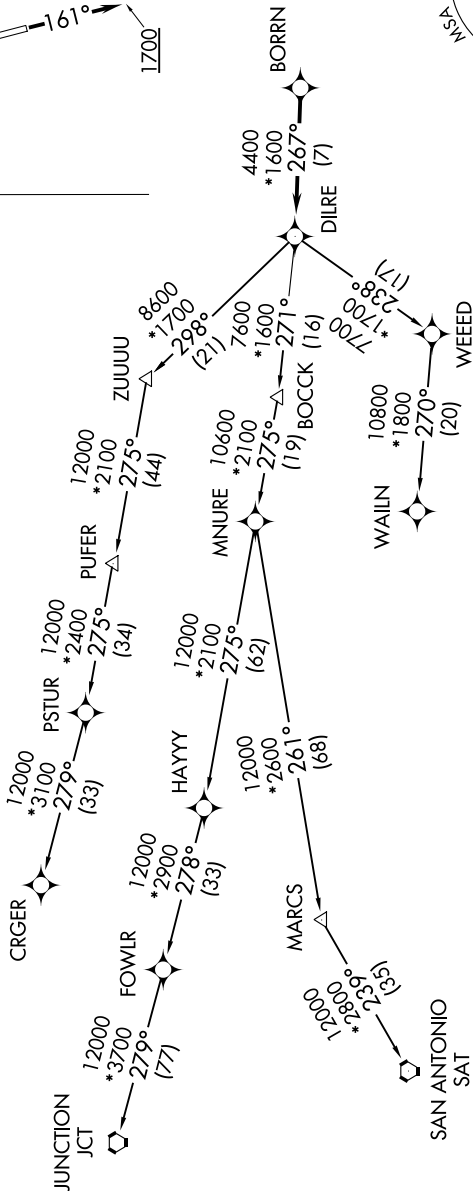
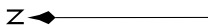
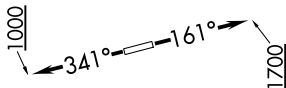
**TOP ALTITUDE:
ASSIGNED BY ATC**

RNAV 1 - DME/DME/IRU or GPS.

RADAR required.

TAKEOFF MINIMUMS
Rwys 16, 34: Standard with minimum
climb of 500'/NM to 580.

CTAF
122.9
HOUSTON DEP CON
119.7 281.4



NOTE: Chart not to scale.

NOTE: CRGR-TRANSITION ATC assigned only
for aircraft departing 54T, AXH, EFD, GLS,
HPY, IWS, LBX, LVJ, SGR, TME, T00, T41.

(NARRATIVE ON FOLLOWING PAGE)

BORRN SIX DEPARTURE (RNAV)