

WAAS CH <b>58230</b> <b>W11A</b>	APP CRS <b>113°</b>	Rwy Idg TDZE Apt Elev	<b>5500</b> <b>1574</b> <b>1574</b>
----------------------------------------	------------------------	-----------------------------	-------------------------------------------

# RNAV (GPS) RWY 11

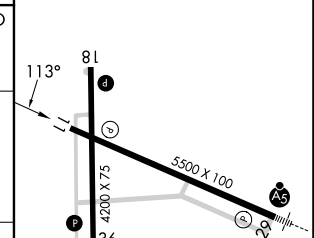
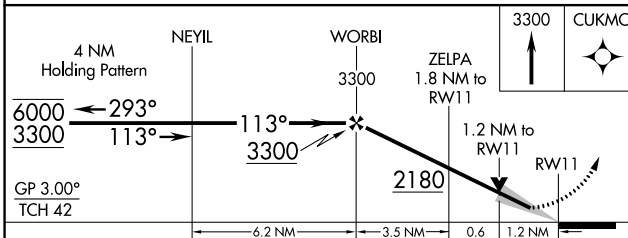
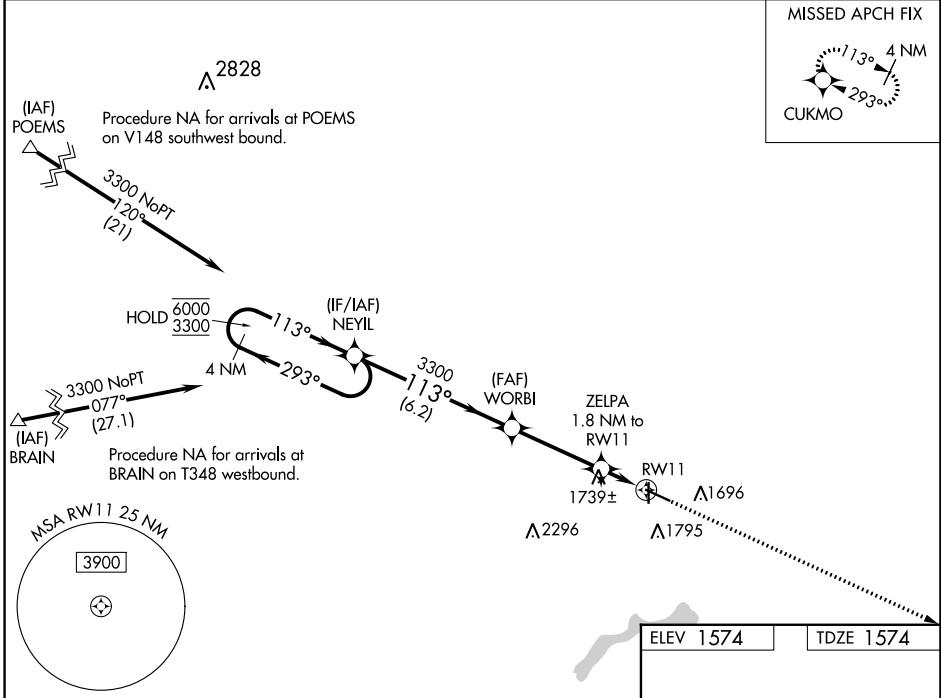
WORTHINGTON MUNI (OTG)

RNP APCH - GPS.

For uncompensated Baro-VNAV systems, LNAV/VNAV NA below -23°C or above 54°C.

MISSED APPROACH: Climb to 3300 direct CUKMO and hold.

AWOS-3PT <b>121.075</b>	MINNEAPOLIS CENTER <b>132.05 317.4</b>	UNICOM <b>122.8</b> (CTAF) <b>0</b>
----------------------------	-------------------------------------------	----------------------------------------



CATEGORY	A	B	C	D
LPV DA		1824-1	250 (300-1)	
LNAV/VNAV DA		1826-1	252 (300-1)	
LNAV MDA	2000-1	426 (500-1)	2000-1¼	426 (500-1¼)
CIRCLING	2100-1	526 (600-1)	2100-1½	2320-2½
			526 (600-1½)	746 (800-2½)

MIRL Rwy 18-36 **0**

HIRL Rwy 11-29 **0**

REIL Rws 11, 18, and 36 **0**

NC-1, 28 NOV 2024 to 26 DEC 2024

NC-1, 28 NOV 2024 to 26 DEC 2024