

WAAS CH 45930 W29A	APP CRS 293°	Rwy Idg TDZE Apt Elev	5500 1570 1574
--	------------------------	-----------------------------	---

RNAV (GPS) RWY 29

WORTHINGTON MUNI (OTG)

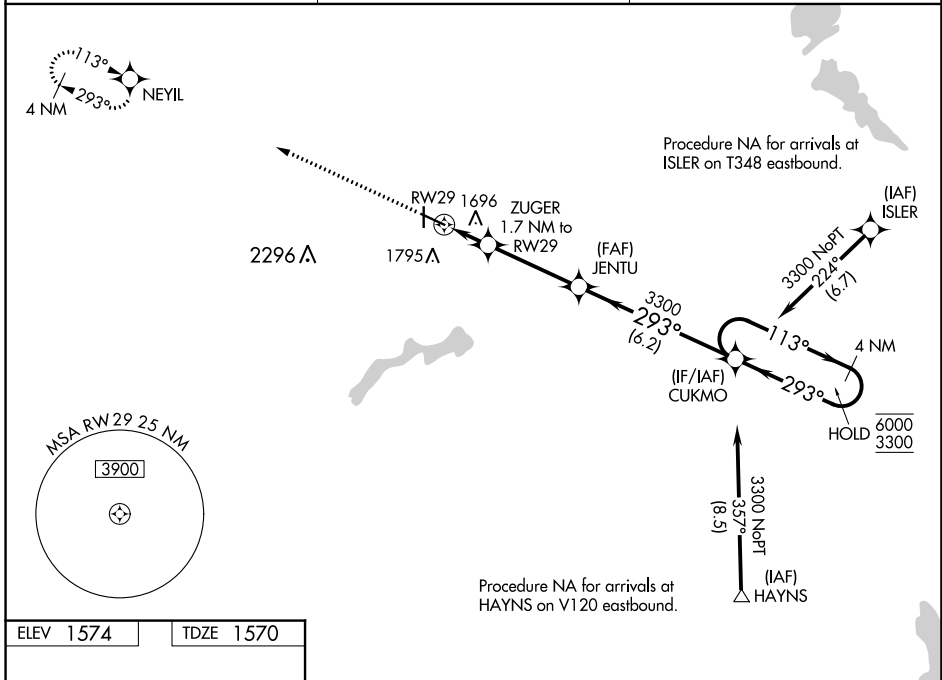
RNP APCH-GPS.

⚠ For uncompensated Baro-VNAV systems, LNAV/VNAV NA below -23°C or above 54°C. For inop ALS, increase LNAV/VNAV all Cats visibility to 7/5 SM.

MALSRL

MISSED APPROACH: Climb to 3300 direct NEYIL and hold.

AWOS-3PT 121.075	MINNEAPOLIS CENTER 132.05 317.4	UNICOM 122.8 (CTAF) 0
----------------------------	---	---------------------------------



ELEV 1574 TDZE 1570

81

4200 X 75

5500 X 100

36

1629

293°

MIRL Rwy 18-36

HIRL Rwy 11-29

REIL Rwy 11, 18, and 36

3300	NEYIL	JENTU	CUKMO	4 NM Holding Pattern
	ZUGER 1.7 NM to RWY 29	3300		
	1.1 NM to RWY 29	2160	293°	113° → 6000
	1.1 NM	0.6 NM	← 293°	← 293° 3300
		3.6 NM		GP 3.00°
		6.2 NM		TCH 43
CATEGORY	A	B	C	D
LPV DA		1770-1/2	200 (200-1/2)	
LNAV/VNAV DA		1867-1/2	297 (300-1/2)	
LNAV MDA	1960-1/2	390 (400-1/2)	1960-5/8	390 (400-5/8)
CIRCLING	2100-1	526 (600-1)	2100-1 1/2 526 (600-1 1/2)	2320-2 1/2 746 (800-2 1/2)

NC-1, 28 NOV 2024 to 26 DEC 2024

NC-1, 28 NOV 2024 to 26 DEC 2024