

WAAS CH 61230 W02A	APP CRS 022°	Rwy Idg TDZE Apt Elev	8012 466 472
--	------------------------	-----------------------------	---

RNAV (GPS) RWY 2

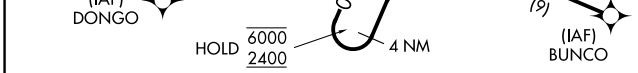
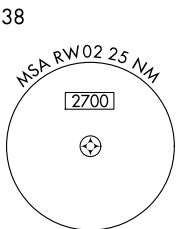
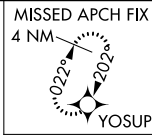
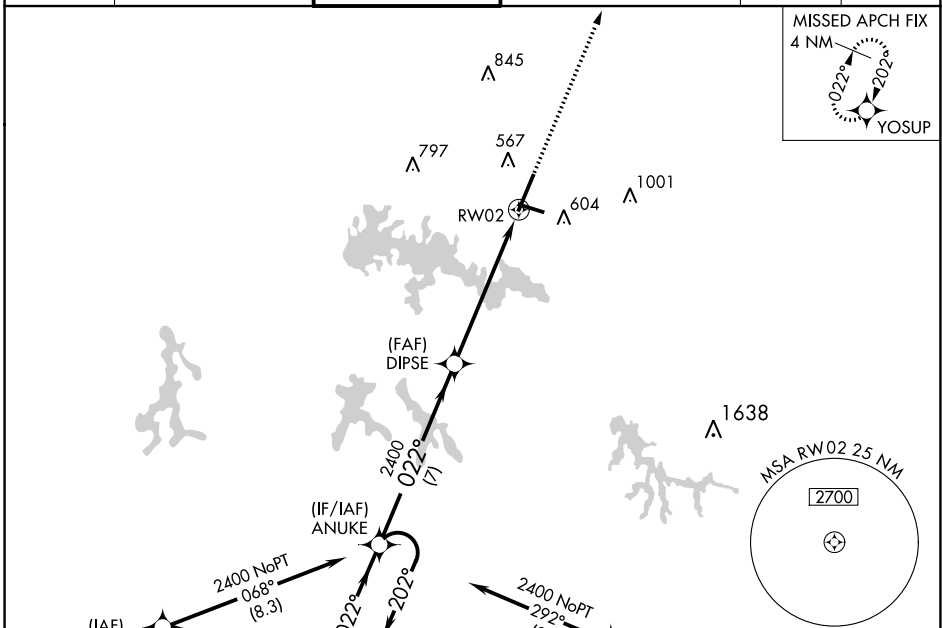
VETERANS AIRPORT OF SOUTHERN ILLINOIS (MWA)

RNP APCH.

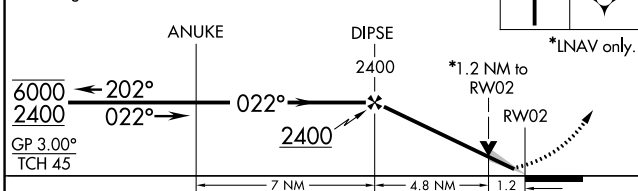
⚠ Circling Rwy 11 NA at night. For uncompensated Baro-VNAV systems, LNAV/VNAV NA below -15°C or above 54°C.

MISSED APPROACH:
Climb to 2400 direct
YOSUP and hold.

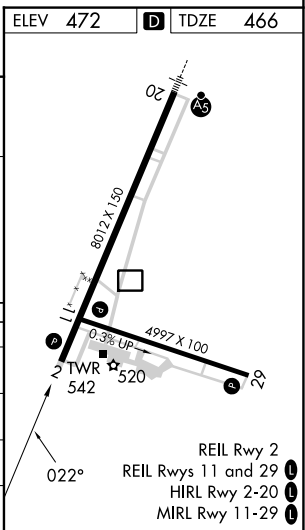
AWOS-3P 119.675	KANSAS CITY CENTER 127.475 346.275	MARION TOWER ★ 128.4 (CTAF) 0	CLNC DEL 127.475 (When twr closed)	GND CON 121.7	UNICOM 122.95
---------------------------	--	---	--	-------------------------	-------------------------



4 NM Holding Pattern
VGSI and RNAV glidepath not coincident (VGSI Angle 3.50/TCH 36).
2400 YOSUP
*LNAV only.



CATEGORY	A	B	C	D
LPV DA		666- ³ / ₄	200 (200- ³ / ₄)	
LNAV/VNAV DA		753- ⁷ / ₈	287 (300- ⁷ / ₈)	
LNAV MDA	940-1	474 (500-1)	940-1 ³ / ₈	474 (500-1 ³ / ₈)
CIRCLING	940-1	468 (500-1)	1040-1 ¹ / ₂	1340-2 ³ / ₄
			568 (600-1 ¹ / ₂)	868 (900-2 ³ / ₄)



REIL Rwy 2
REIL Rws 11 and 29
HIRL Rwy 2-20
MIRL Rwy 11-29