

LOC/DME I-MTN	APP CRS	Rwy Idg	<b>6997</b>
<b>110.7</b>	<b>326°</b>	TDZE	<b>14</b>
Chan <b>44</b>		Apt Elev	<b>22</b>

# ILS or LOC RWY 33

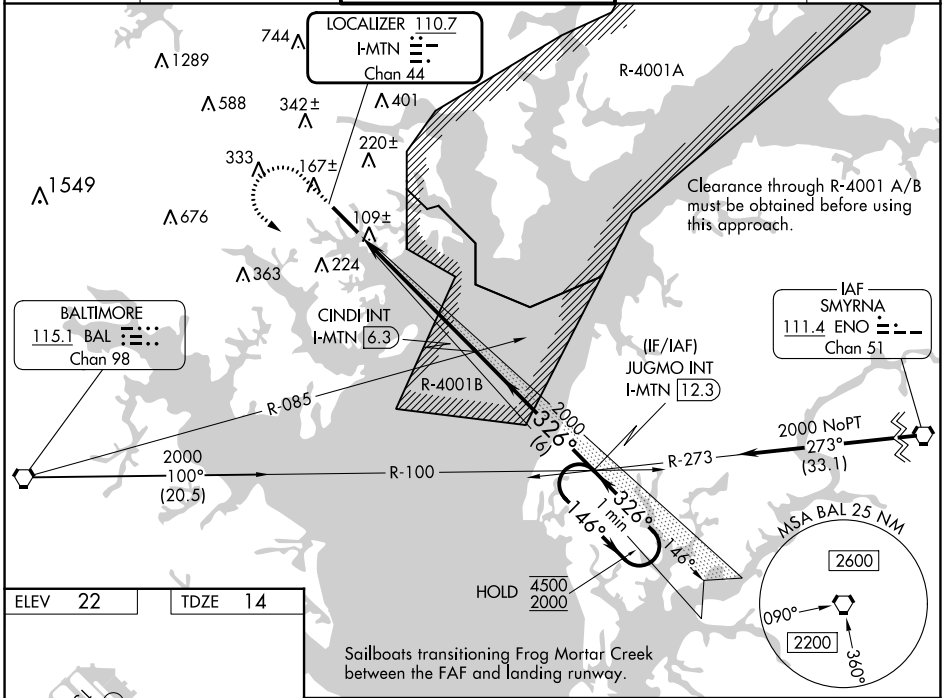
MARTIN STATE (MTN)

**RADAR required.**

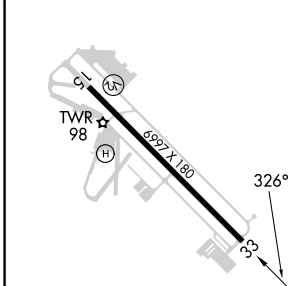
**⚠ Circling NA for Cat D northeast of Rwy 15-33. Rwy 33 helicopter visibility reduction below 3/4 SM NA. VDP NA when using Baltimore/Washington Intl Thurgood Marshall altimeter setting. When local altimeter setting not received, use Baltimore/Washington Intl Thurgood Marshall altimeter setting; increase S-ILS 33 DA to 266 feet; increase all MDAs 60 feet and S-LOC 33 visibility Cat C/D 1/4 SM, and Circling visibility Cat C/D 1/4 SM.**

**MISSED APPROACH:** Climb to 800 then climbing left turn to 2000 on heading 146° and on BAL VORTAC R-100 to JUGMO INT/I-MTN 12.3 DME and hold.

ATIS	POTOMAC APP CON	MARTIN TOWER*	GND CON	UNICOM
<b>124.925</b>	<b>119.0 282.275</b>	<b>121.3 (CTAF) 254.425</b>	<b>121.8 253.4</b>	<b>122.95</b>



ELEV 22	TDZE 14
---------	---------



**HIRL Rwy 15-33**

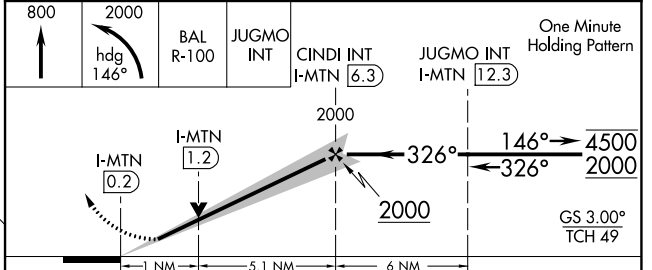
**REIL Rws 15 and 33**

Rwy 33 Idg 8100' (Military Operations Only)

Rwy 15 take-off 8100' (Military Operations Only)

FAF to MAP 6.1 NM

Knots	60	90	120	150	180
Min:Sec	6:06	4:04	3:03	2:26	2:02



CATEGORY	A	B	C	D
S-ILS 33		214-1	200 (200-1)	
S-LOC 33		380-1	366 (400-1)	
<b>CIRCLING</b>	540-1	518 (600-1)	580-1½ 558 (600-1½)	740-2¼ 718 (800-2¼)

NE-3, 28 NOV 2024 to 26 DEC 2024

NE-3, 28 NOV 2024 to 26 DEC 2024