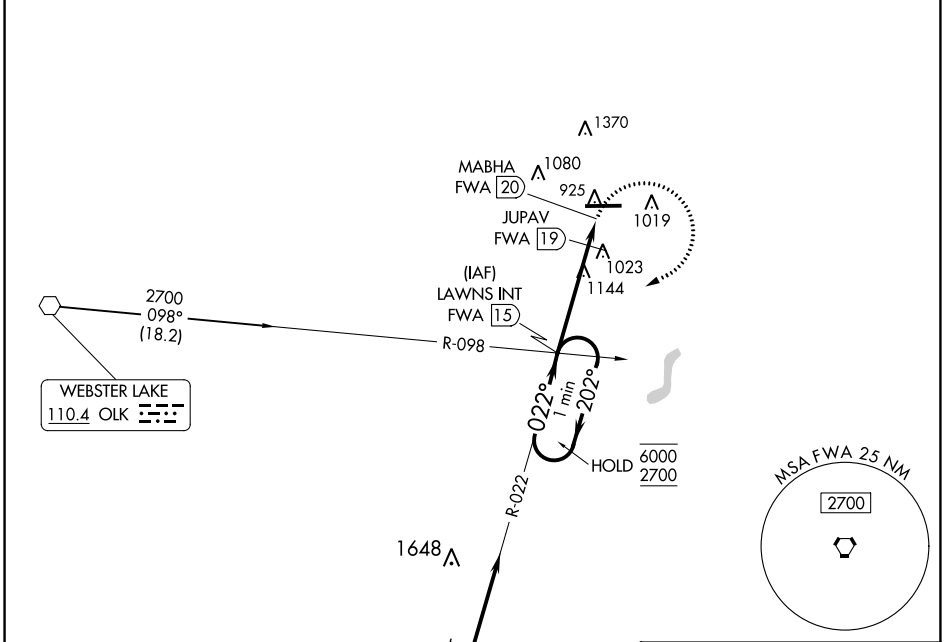


VORTAC FWA <b>117.8</b> Chan 125	APP CRS <b>022°</b>	Rwy Idg TDZE N/A Apt Elev 881
----------------------------------------	------------------------	----------------------------------------

**VOR-A**  
DE KALB COUNTY (GWB)

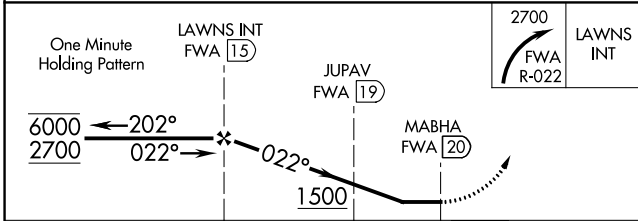
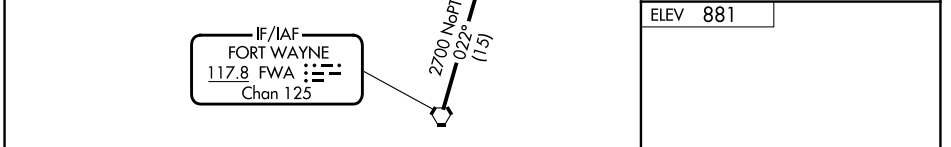
**▽**  
**▲** MISSED APPROACH: Climbing right turn to 2700 on FWA R-022 to LAWNS INT/FWA 1.5 DME and hold, continue climb-in-hold to 2700.

AWOS-3P <b>124.15</b>	FORT WAYNE APP CON <b>127.2 284.6</b>	CLNC DEL <b>126.6</b>	UNICOM <b>123.0 (CTAF)</b>
--------------------------	------------------------------------------	--------------------------	-------------------------------



EC-2, 28 NOV 2024 to 26 DEC 2024

EC-2, 28 NOV 2024 to 26 DEC 2024



ELEV 881

Profile view diagram showing the 7105 x 100 runway and various navigation aids. The diagram includes a 2700 ft holding pattern and a 022° approach path.

REIL Rwy 9 and 27  
MIRL Rwy 9-27

FAF to MAP 5 NM

Knots	60	90	120	150	180
Min:Sec	5:00	3:20	2:30	2:00	1:40

CATEGORY	A	B	C	D
<b>C</b> CIRCLING	1500-1 619 (700-1)	1560-1 679 (700-1)	1720-2½ 839 (900-2½)	1720-2¾ 839 (900-2¾)
JUPAV FIX MINIMUMS				
<b>C</b> CIRCLING	1360-1 479 (500-1)	1560-1 679 (700-1)	1720-2½ 839 (900-2½)	1720-2¾ 839 (900-2¾)