


WAAS CH <b>50107</b> <b>W27A</b>	APP CRS <b>274°</b>	Rwy Idg TDZE Apt Elev	<b>6500</b> <b>778</b> <b>778</b>
----------------------------------------	------------------------	-----------------------------	-----------------------------------------

# RNAV (GPS) RWY 27

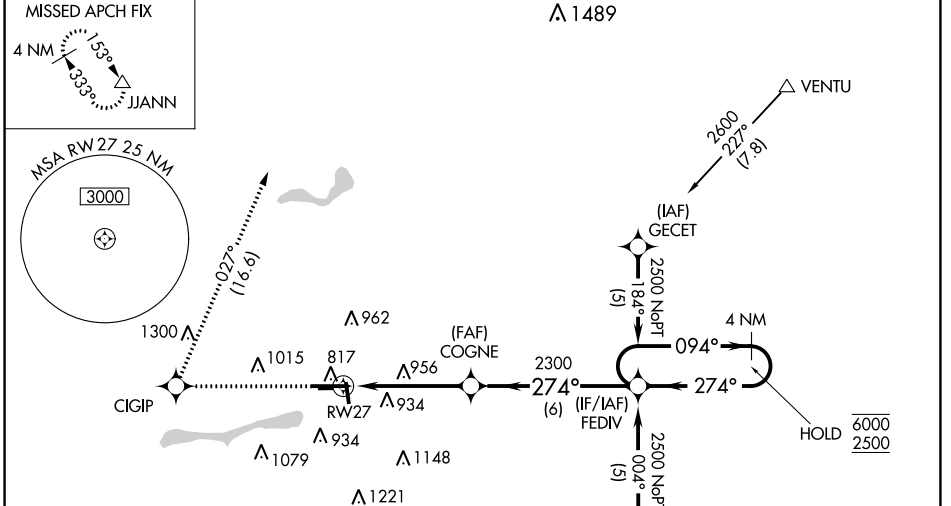
ELKHART MUNI (EKM)

RNP APCH - GPS.

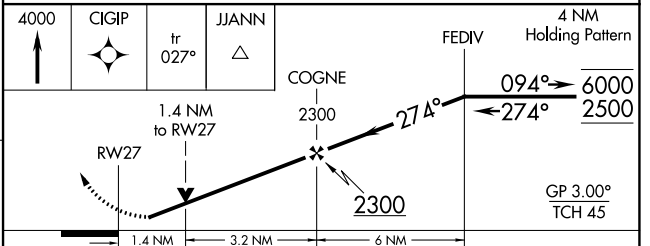
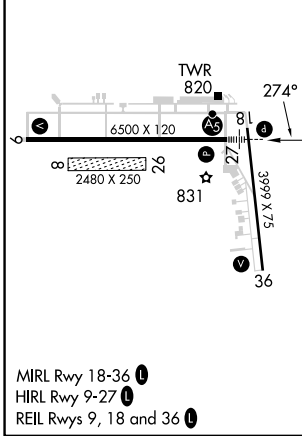
**⚠** Circling NA to Rwy 8 and 26. Circling Rwy 36 NA at night. Baro-VNAV and VDP NA when using South Bend altimeter setting. Rwy 27 helicopter visibility reduction below RVR 4000 NA. For uncompensated Baro-VNAV systems, LNAV/VNAV NA below -16°C or above 54°C. When local altimeter setting not received, use South Bend altimeter setting: increase LPV DA to 1111 feet; increase LNAV/VNAV DA to 1261 feet; increase all MDA 40 feet and LNAV visibility Cat C/D to RVR 5500, Circling Cat D visibility ½ SM. For inop ALS, increase LPV all Cats visibility to RVR 4500, LNAV/VNAV all Cats visibility to 1¾ SM, LNAV Cat A/B visibility to RVR 5500 and Cat C/D to 1¾ SM. For inop ALS when using South Bend altimeter setting, increase LNAV/VNAV all Cats visibility to 1¾ SM and LNAV Cat A/B to RVR 5500.

**MALSRS**  MISSED APPROACH: Climb to 4000 direct CIGIP and on track 027° to JJANN and hold.

AWOS-3 <b>124.475</b>	SOUTH BEND APP CON * <b>118.55 257.8</b>	ELKHART TOWER * <b>119.5 (CTAF) 0</b>	GND CON <b>121.8</b>	CLNC DEL <b>121.8</b>	CLNC DEL <b>119.7</b> (When twr closed)	UNICOM <b>122.95</b>
--------------------------	---------------------------------------------	------------------------------------------	-------------------------	--------------------------	-----------------------------------------------	-------------------------



ELEV 778	<b>D</b>	TDZE 778
----------	----------	----------



CATEGORY	A	B	C	D
LPV DA		1071/40	293 (300-¾)	
LNAV/VNAV DA		1221/50	443 (500-1)	
LNAV MDA	1260/40	482 (500-¾)	1260/50	482 (500-1)
<b>C</b> CIRCLING	1260-1 482 (500-1)	1300-1 522 (600-1)	1380-1¾ 602 (700-1¾)	1580-2½ 802 (900-2½)

EC-2, 28 NOV 2024 to 26 DEC 2024

EC-2, 28 NOV 2024 to 26 DEC 2024