

APP CRS	Rwy Idg	3999
356°	TDZE	776
	Apt Elev	778

RNAV (GPS) RWY 36

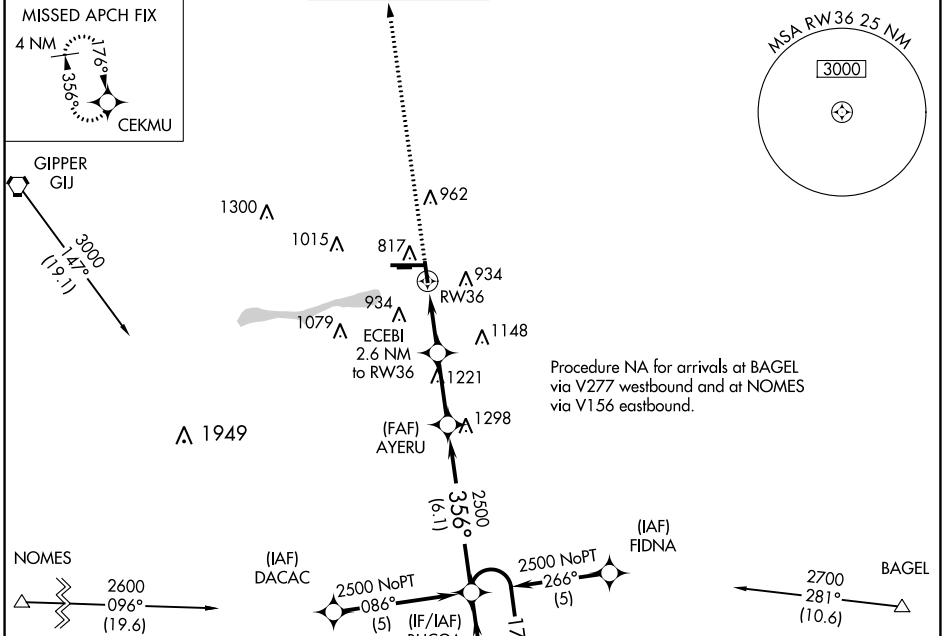
ELKHART MUNI (EKM)

RNP APCH.

⚠ When local altimeter setting not received, use South Bend altimeter setting and increase all MDA 40 feet. Straight-in and Circling RWY 36 NA at night. Rwy 36 helicopter visibility reduction below 1 SM NA. Circling NA to Rwys 8 and 26.

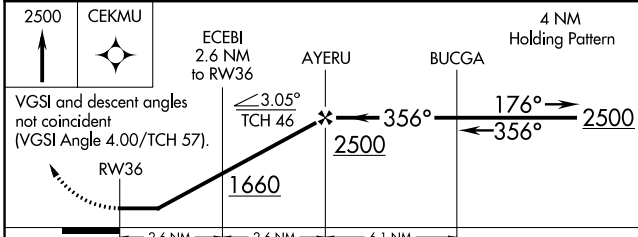
MISSED APPROACH: Climb to 2500 direct CEKMU and hold.

AWOS-3	SOUTH BEND APP CON *	ELKHART TOWER *	GND CON	CLNC DEL	CLNC DEL	UNICOM
124.475	118.55 257.8	119.5 (CTAF) 0	121.8	121.8	119.7 (When twr closed)	122.95

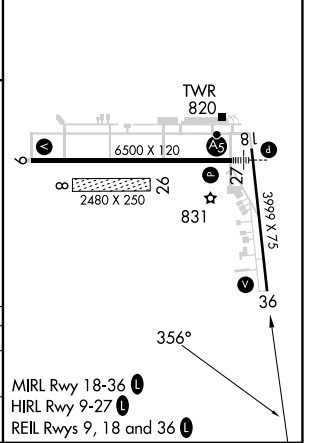


ELEV	778	TDZE	776
------	------------	------	------------

2500	CEKMU	ECEBI 2.6 NM to RW36	AYERU	BUCGA	4 NM Holding Pattern
------	-------	----------------------	-------	-------	----------------------



ELEV	778	TDZE	776
------	------------	------	------------



CATEGORY	A	B	C	D
LNVA MDA	1220-1	444 (500-1)	1220-1 1/4 444 (500-1 1/4)	1220-1 1/2 444 (500-1 1/2)
CIRCLING	1240-1 462 (500-1)	1300-1 522 (600-1)	1380-1 3/4 602 (700-1 3/4)	1580-2 1/2 802 (900-2 1/2)

EC-2, 28 NOV 2024 to 26 DEC 2024

EC-2, 28 NOV 2024 to 26 DEC 2024