

WAAS CH 63241 W33A	APP CRS 326°	Rwy Idg 4350 TDZE 142 Apt Elev 148
--	------------------------	---

RNAV (GPS) RWY 33

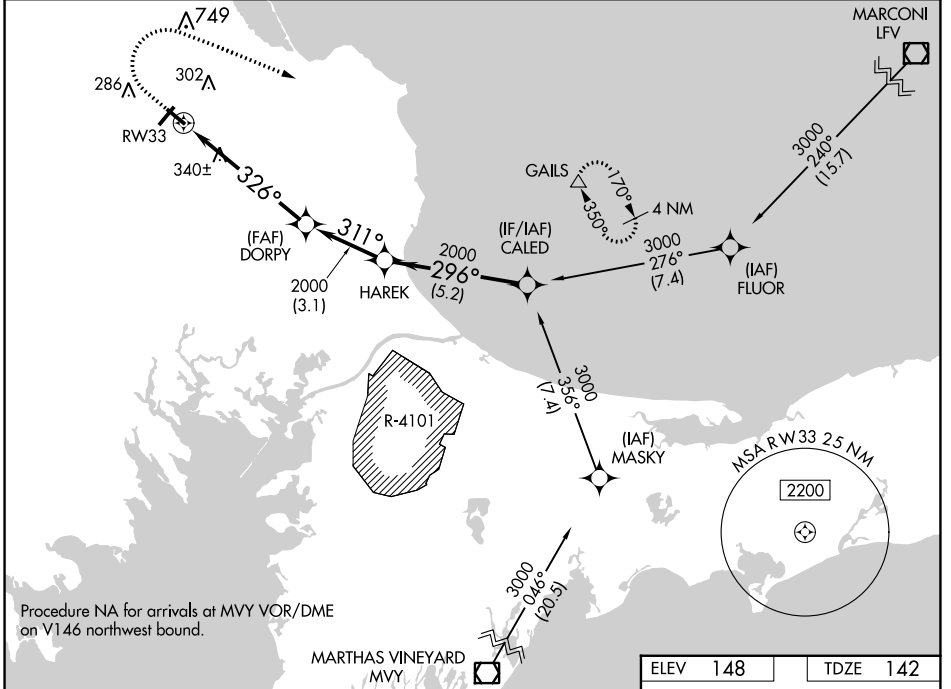
PLYMOUTH MUNI (PYM)

RNP APCH - GPS.

- ⚠ Circling Rwy 15 NA at night. Rwy 33 helicopter visibility reduction below 3/4 SM NA.
- ⚠ For uncompensated Baro-VNAV systems, LNAV/VNAV NA below -18°C or above 54°C.

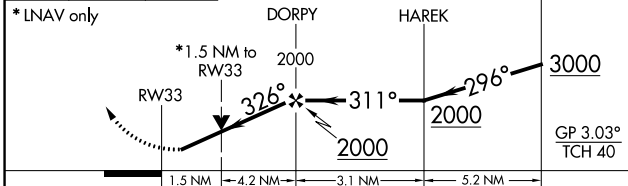
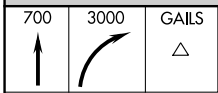
MISSED APPROACH: Climb to 700 then climbing right turn to 3000 direct GAILS and hold.

ASOS 135.625	BOSTON APP CON 118.2 284.6	CLINC DEL 127.75	UNICOM 122.725 (CTAF)	122.9 0
------------------------	--------------------------------------	----------------------------	---------------------------------	----------------

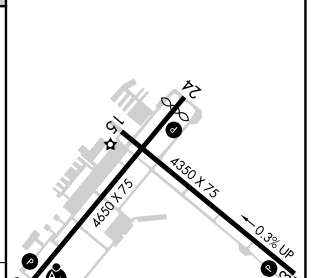


Procedure NA for arrivals at MVY VOR/DME on V146 northwest bound.

MARTHAS VINEYARD MVY



ELEV 148	TDZE 142
----------	----------



CATEGORY	A	B	C	D
LPV DA	393-3/4	251 (300-3/4)		NA
LNAV/VNAV DA	486-1	344 (400-1)		NA
LNAV MDA	660-1	518 (600-1)	660-1 3/8 518 (600-1 3/8)	NA
CIRCLING	660-1	512 (600-1)	760-1 3/4 612 (700-1 3/4)	NA

REIL Rwy 24 0
MIRL Rwy 6-24 and 15-33 0

NE-1, 28 NOV 2024 to 26 DEC 2024

NE-1, 28 NOV 2024 to 26 DEC 2024