

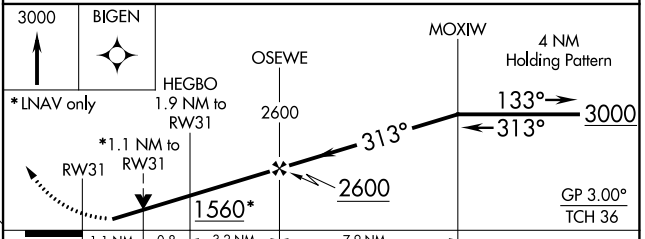
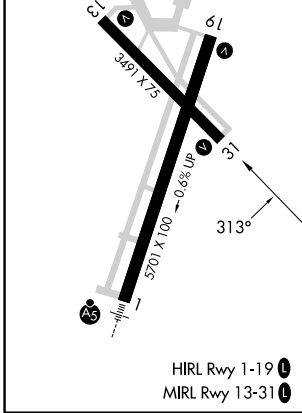
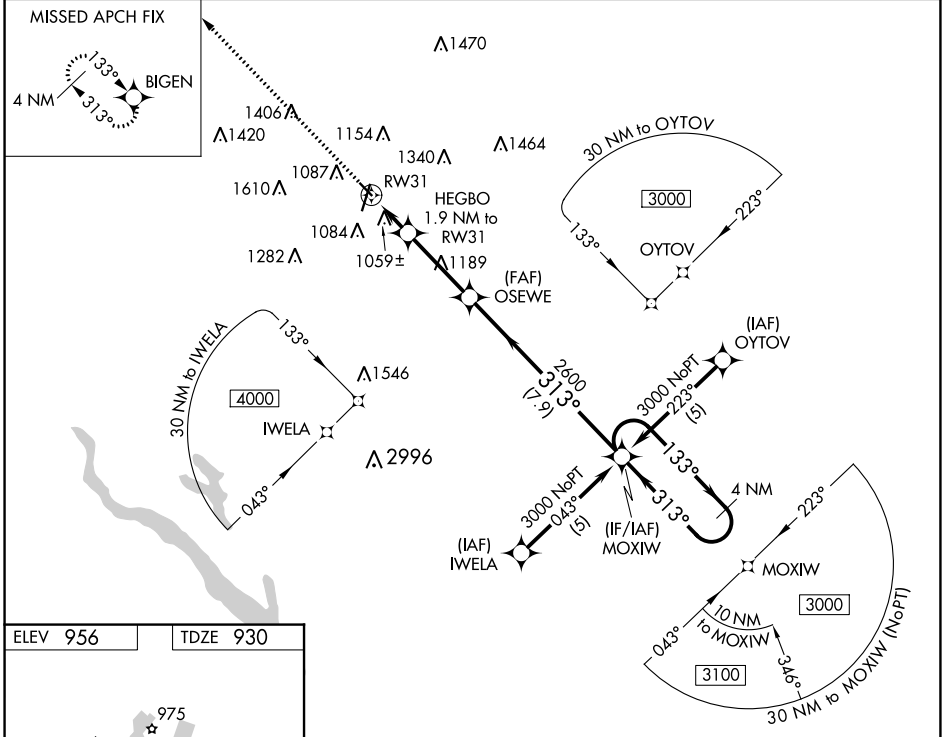
WAAS CH <b>90517</b> <b>W31A</b>	APP CRS <b>313°</b>	Rwy Idg TDZE Apt Elev	<b>3491</b> <b>930</b> <b>956</b>
--	------------------------	-----------------------------	---

# RNAV (GPS) RWY 31

AMES MUNI (AMW)

RNP APCH.		MISSED APPROACH: Climb to 3000 direct BIGEN and hold.	
For uncompensated Baro-VNAV systems, LNAV/VNAV NA below -16°C or above 54°C. Rwy 31 helicopter visibility reduction below 3/4 SM NA.			

ASOS <b>132.025</b>	DES MOINES APP CON <b>123.9 307.15</b>	CLNC DEL <b>126.0</b>	UNICOM <b>122.7 (CTAF) 0</b>
------------------------	---	--------------------------	---------------------------------



CATEGORY	A	B	C	D
LPV DA	1205-1	275 (300-1)		NA
LNAV/VNAV DA	1436-1 <sup>3</sup> / <sub>4</sub>	506 (500-1 <sup>3</sup> / <sub>4</sub> )		NA
LNAV MDA	1320-1	390 (400-1)		NA

NC-3, 28 NOV 2024 to 26 DEC 2024

NC-3, 28 NOV 2024 to 26 DEC 2024