

APP CRS	Rwy Idg	<b>4700</b>
<b>095°</b>	TDZE	<b>740</b>
	Apt Elev	<b>747</b>

# RNAV (GPS) RWY 9

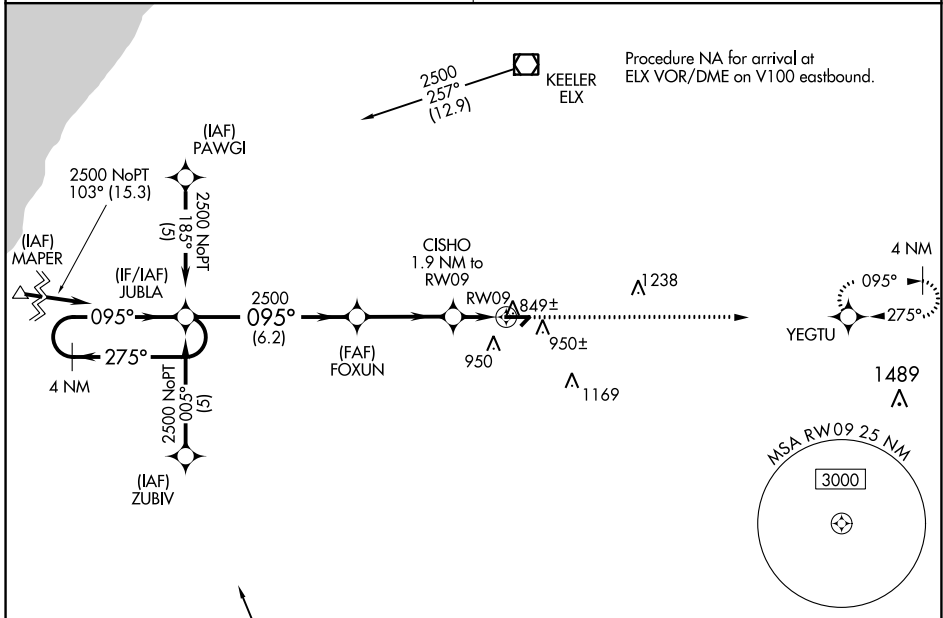
DOWAGIAC MUNI (C91)

**▼** DME/DME RNP-0.3 NA. Procedure NA at night.  
**▲** NA Visibility reduction by helicopters NA. Obtain local altimeter setting on CTAF, when not received, use Elkhart altimeter setting and increase all MDA 60 feet; increase LNAV Cat C and Circling Cats C and D visibility ¼ SM.

**MISSED APPROACH:** Climb to 2700 direct YEGTU and hold.

**SOUTH BEND APP CON ★**  
**118.55 257.8**

**UNICOM**  
**122.8 (CTAF) 0**



EC-1, 28 NOV 2024 to 26 DEC 2024

EC-1, 28 NOV 2024 to 26 DEC 2024

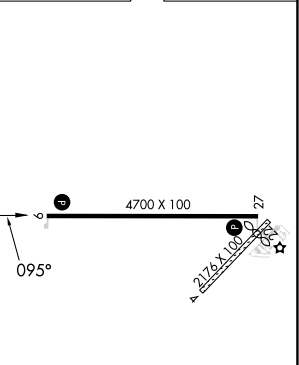
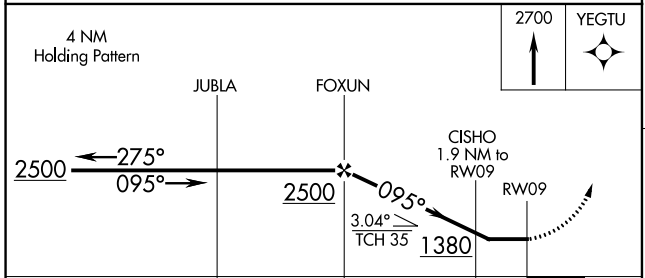
ELEV 747	TDZE 740
----------	----------

4 NM Holding Pattern

2700 YEGTU

Procedure NA for arrival at GIJ VORTAC on V228 eastbound.

GIPPER GIJ: 2500 (342°/9.2)



CATEGORY	A	B	C	D
LNAV MDA	1100-1 360 (400-1)			1100-1¼ 360 (400-1¼)
CIRCLING	1320-1 573 (600-1)		1480-2 733 (800-2)	1480-2¼ 733 (800-2¼)

REIL Rwy 9 and 27 0

MIRL Rwy 9-27 0