

(GABBE3.GABBE) 24193

# GABBE THREE DEPARTURE(RNAV)

AL-5326 (FAA)

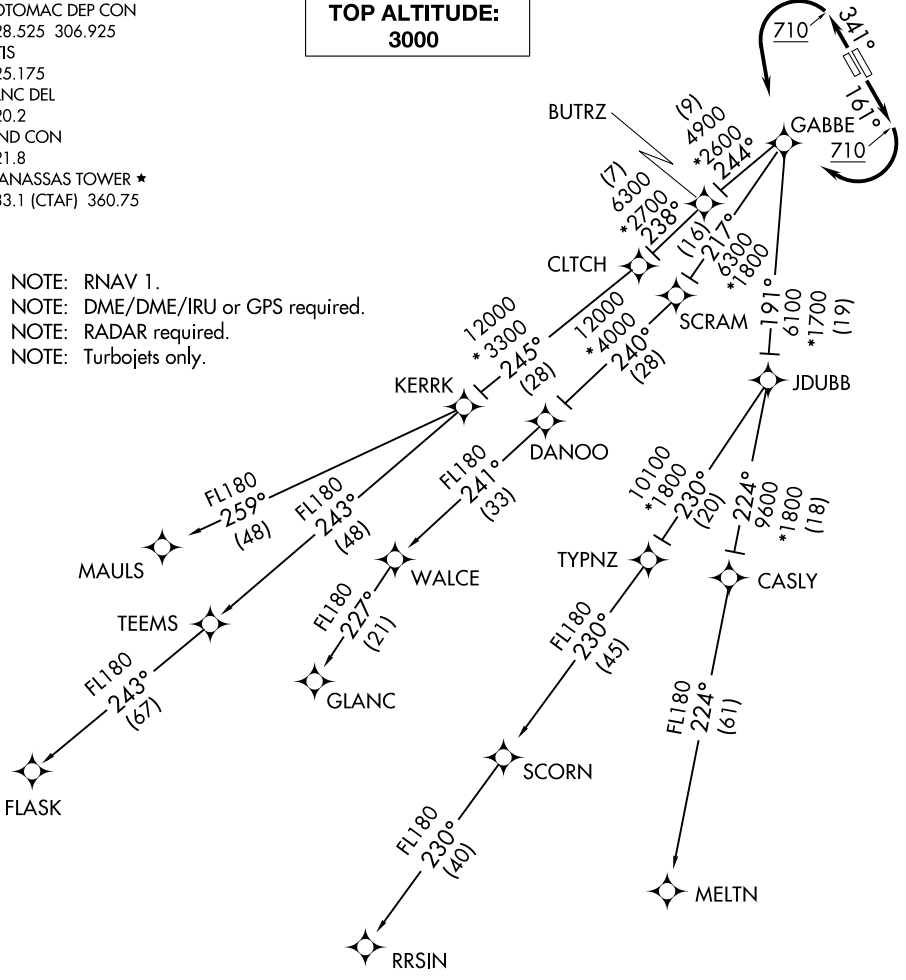
MANASSAS RGNL/HARRY P DAVIS FLD (HEF)

WASHINGTON, DC

POTOMAC DEP CON  
 128.525 306.925  
 ATIS  
 125.175  
 CLNC DEL  
 120.2  
 GND CON  
 121.8  
 MANASSAS TOWER ★  
 133.1 (CTAF) 360.75

**TOP ALTITUDE:  
 3000**

- NOTE: RNAV 1.
- NOTE: DME/DME/IRU or GPS required.
- NOTE: RADAR required.
- NOTE: Turbojets only.



**TAKEOFF MINIMUMS:**

Rwys 16L/R, 34L/R: Standard with minimum climb of 500' per NM to 710.

(NARRATIVE ON FOLLOWING PAGE)

NOTE: Chart not to scale.

# GABBE THREE DEPARTURE(RNAV)

(GABBE3.GABBE) 26MAR20

MANASSAS RGNL/HARRY P DAVIS FLD (HEF)

WASHINGTON, DC

NE-3, 28 NOV 2024 to 26 DEC 2024

NE-3, 28 NOV 2024 to 26 DEC 2024